

## STAINLESS STEEL BUTT HINGE

### Code No. S 221

#### APPLICATION

- Suitable for aluminium and timber doors with aluminium, steel and timber frames.

#### SPECIFICATION

- **Material:** Stainless Steel **304** Grade.
- **Pin:** 6.9mm - Stainless Steel **304** Grade Punch-Out Pin.
- **Knuckle:** Round
- **Endcaps:** Pressed-in interference fit. Stainless Steel **304** Grade.
- Stamped with McCallum crest.
- Loose Pin.

#### INSTALLATION GUIDE ONLY

- **Door thickness: Minimum 35mm.**
- When using a door closer, we recommend a minimum of 4 hinges be used, with the top hinge located as high as possible.
- Standard Door: 2040 (H) x 820 (W) - 3 hinges.

#### FIXING

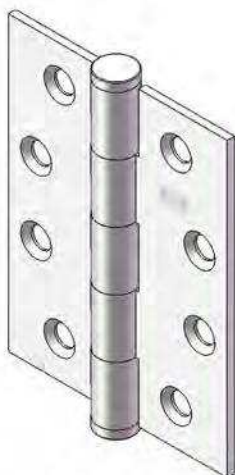
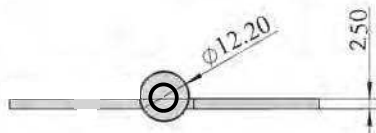
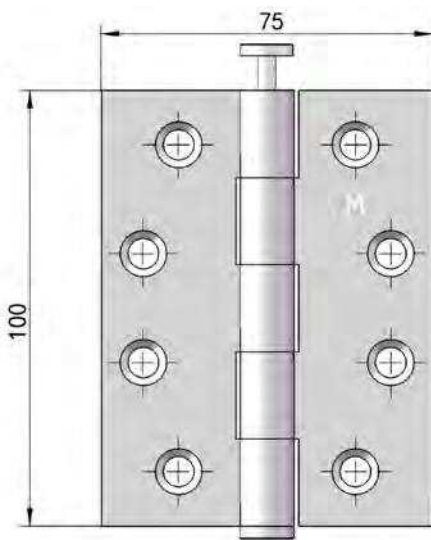
- 32mm x 10g stainless steel fasteners for timber (supplied).
- 12mm x M5 stainless steel metal fasteners (supplied).
- Pop rivets are not recommended.
- Not recommended for Bi-Fold door systems.

#### FINISH

- Satin finish.

#### OLD CODE NO.

- S10075 SLP



**Code No. S 221**