

STAINLESS STEEL BUTT HINGE

Code No. S 234

APPLICATION

- Suitable for aluminium and timber doors with aluminium, steel and timber frames.

SPECIFICATION

- **Material:** Stainless Steel **304** Grade.
- **Pin Dia:** 6.9mm - Stainless Steel **304** Grade.
- **Knuckle:** Round
- **Endcaps:** Pressed-in interference fit. Stainless Steel **304** Grade.
- Stamped with McCallum crest.
- Fixed Pin.
- **Bearings:** 2 Stainless Steel Off-Cage Ball Bearings.

INSTALLATION GUIDE ONLY

- **Door thickness: Minimum 35mm.**
- When using a door closer, we recommend a minimum of 4 hinges be used, with the top hinge located as high as possible.
- Standard Door: 2040 (H) x 820 (W) - 3 hinges.

FIXING

- 32mm x 10g stainless steel fasteners for timber (supplied).
- 12mm x M5 stainless steel metal fasteners (supplied).
- Pop rivets are not recommended.
- Not recommended for Bi-Fold door systems.

FINISH

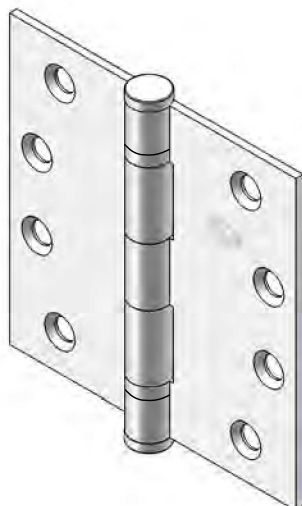
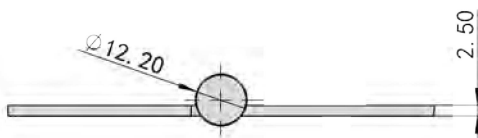
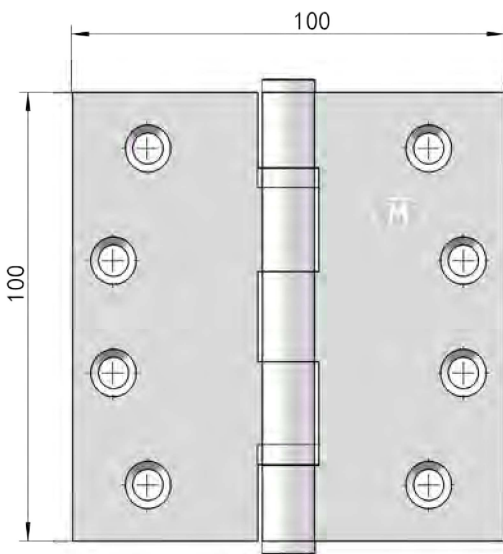
- Satin Stainless Steel

OLD CODE NO.

- SB100100 SFP

SPECIAL NOTE

- The S 234 meets the UK and the Council of European Communities standard for Pedestrian access doors, including fire and smoke doors. The EC certificate of Conformity is 359-CPD-0043 / EN 1935:2002 / AC : 2003.



Code No. S 234