

## RP91



A heavy duty threshold plate with integral sill gasket that can be used in conjunction with Raven door bottom seals on roll-up and tilt up doors.

RP91 has an upstand to prevent water penetration and a ramped section to shed water away.

**Location:** Door sill.

**Finish:** Satin clear (silver) or bronze anodised aluminium (25µm).

**Fixing:** Screw fix. Colour matched zinc plated, cross recess head CSK S.T. screws supplied.

**Seal:** RP404a. Grey flexible PVC.

**Sizes:** Available in stock lengths.

### Approvals

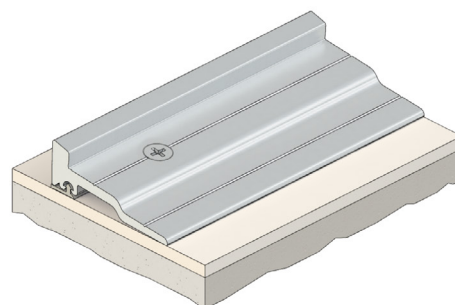
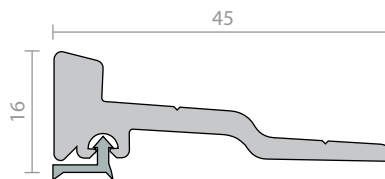
**Access & Mobility NZ:** NZ BC Compliance Doc. D1 Pt. 1.3.2.

**Fire AUS/NZ:** NCC Spec. C3.4. AS1530.4 & AS/NZS 1905.1. NZ BC Compliance Doc. C/AS1 6.19.2(a) & App. C6.1.1.

**UK/EU:** Approved Document B. Approved to BS 476 Pt. 20 & 22 (similar to BS EN 1634-1).

**FRL & FRR-/240/30.**

**BAL sFZ** when used with a BAL rated door bottom seal in accordance with AS 3959.



## RP95, RP96



Low profile threshold plates that can be used in conjunction with Raven door bottom seals to prevent rain, draught, noise and smoke infiltration.

**Location:** Door sill.

**Finish:** Satin clear (silver) or bronze anodised aluminium (25µm).

**Fixing:** Screw fix or builders adhesive for concealed fixing (user determined). Colour matched zinc plated, cross recess head CSK S.T. screws supplied.

**Sizes:** Available in stock lengths.

### Approvals

**UL** Cert. GVI.R37913

**Access & Mobility AUS/NZ:** NCC D2.15 & D3.3. AS1428.1. NZ BC Compliance Doc. D1/AS1 1.3.2.

**UK/EU:** Approved Document M.

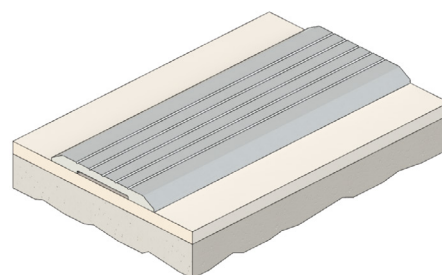
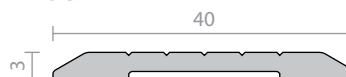
**Fire AUS/NZ:** NCC Spec. C3.4. AS1530.4 & AS/NZS 1905.1. NZ BC Compliance Doc. C/AS1 6.19.2(a) & App. C6.1.1.

**UK/EU:** Approved Document B. BS 476 Pt. 20 & 22 (similar to BS EN 1634-1).

**FRL & FRR-/240/30 and FD240.**

**BAL sFZ** when used with a BAL rated door bottom seal in accordance with AS 3959.

### RP95



### RP96

