

RP137



A low profile, extra wide heavy duty threshold plate that can be used in conjunction with Raven door bottom seals to prevent rain, draughts, noise and smoke infiltration. Ideal for larger style commercial door frames.

Location: Door sill.

Finish: Satin clear (silver) anodised aluminium (25µm).

Fixing: Screw fix or builders adhesive for concealed fixing (user determined). Colour matched zinc plated, cross recess head CSK S.T. screws supplied.

Sizes: 3000mm, 2000mm, 1750mm, 1000mm.

Approvals

Cert. GVYI.R37913

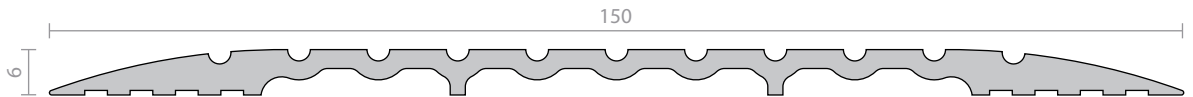
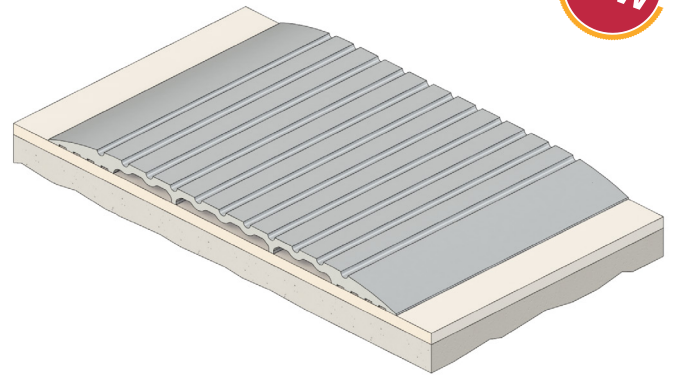
Access & Mobility AUS/NZ: NCC D2.15 & D3.3. AS1428.1. NZ BC Compliance Doc. D1/AS1 1.3.2.
UK/EU: Approved Document M.

Fire AUS/NZ: NCC Spec. C3.4. AS1530.4 & AS/NZS 1905.1. NZ BC Compliance Doc. C/AS1 6.19.2(a) & App. C6.1.1.

UK/EU: Approved Document B. BS 476 Pt. 20 & 22 (similar to BS EN 1634-1).

FRL & FRR-/240/30 and FD180.

BAL \leq FZ when used with a BAL rated door bottom seal in accordance with AS 3959.



RP138



A heavy duty threshold ramp that can be used as a border for internal floor matting or be positioned back to back to form a two way threshold ramp conforming to NCC Pt. D2.15 Thresholds (b).

Ideal for larger style commercial door frames.

RP138 has been designed to accommodate a concealed screw fix through the door jambs.

Location: Door sill.

Finish: Satin clear (silver) anodised aluminium (25µm).

Fixing: Screw fix or builders adhesive for concealed fixing (user determined). Colour matched zinc plated, cross recess head CSK S.T. screws supplied.

Sizes: 3000mm, 2500mm, 2000mm, 1250mm, 1000mm.

Approvals

Cert. GVYI.R37913

Access & Mobility AUS/NZ: NCC D2.15 & D3.3. AS1428.1. NZ BC Compliance Doc. D1/AS1 1.3.2.
UK/EU: Approved Document M.

Fire AUS/NZ: NCC Spec. C3.4. AS1530.4 & AS/NZS 1905.1. NZ BC Compliance Doc. C/AS1 6.19.2(a) & App. C6.1.1.

UK/EU: Approved Document B. BS 476 Pt. 20 & 22 (similar to BS EN 1634-1).

FRL & FRR-/240/30 and FD180.

BAL \leq FZ when used with a BAL rated door bottom seal in accordance with AS 3959.

