

Brush Strip Seals

Nylon Filament



RP49, RP50



Versatile nylon brush strip seals with angled aluminium carriers. The RP49 has a 90 degree angle and the RP50 has a 45 degree angle.

Location:

RP49 Frame or stiles of sliding doors (user determined).

RP50 Panel lift doors (user determined).

Finish: Satin clear (silver), bronze anodised aluminium (15µm) or paint at extra cost (page 7).

Fixing: Self adhesive or can be screw fixed. *Note: Contact surface must be clean, smooth and if painted, well cured.*

Seal: Black fine, dense, UV stabilised nylon filaments.

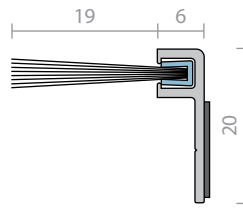
Sizes: Available in stock lengths.

Approvals

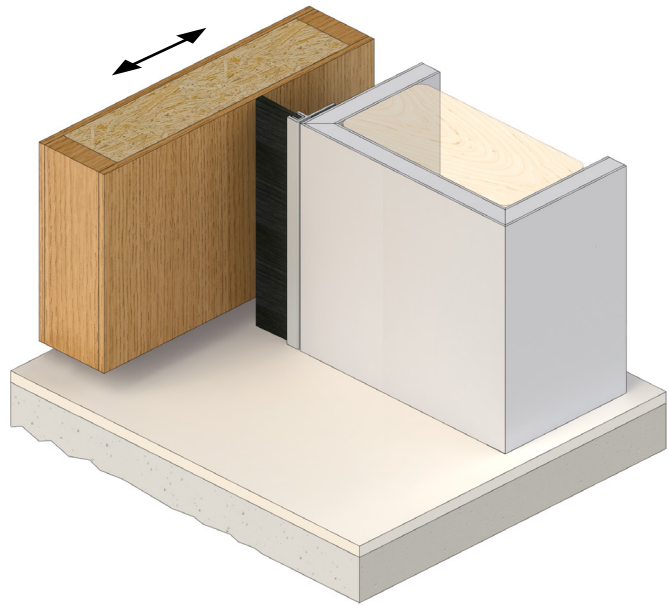
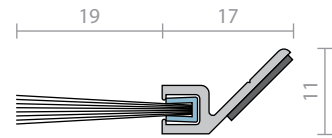
Energy NCC Pt. 3.12.3.3 & J3.4.

BAL SFZ when used on a garage in accordance with AS 3959.

RP49



RP50



RP52F



A nylon brush strip without holder, that is fitted in a concealed manner into a machined groove in a door. Where a small clearance is encountered, the groove should be double morticed to allow the brush and fin to flex. The brush houses a unique medium temperature fin, which is effective in the sealing of medium temperature smoke, noise and weather.

Location: Stiles or bottoms of single, double, sliding or double acting doors.

Min/Max Gap: Up to 13mm (user determined).

Fixing: Inserted into morticed groove (optional adhesive if required). Where a small clearance is encountered, the groove should be double morticed to allow the brush to flex.

Seal: Black fine, dense, UV stabilised nylon filaments with a medium temperature smoke barrier fin within a galvanised spine.

Sizes: Available in stock lengths.

Approvals

Smoke AS1530.7. AS6905.

Energy NCC Pt. 3.12.3.3 & J3.4.

BAL SFZ when used on a garage in accordance with AS 3959.

Patented.

