



Shower Curtain Rail | Stainless Steel

Models RBA4171-100, RBA4171-101



Materials & Features

90° Shower Curtain rail is manufactured from #304 stainless steel tubing. Rail is adjustable at both ends for easy installation in either RH or LH orientation.

Technical Detail

Length:	1635mm x 1500mm
Rail:	25mm [Dia]
Brackets:	Stainless steel
Hanger Rod:	12mm [Dia] x 1M [L]
Hooks:	Order separately [see below]
Curtain:	Order separately [see below]

Available Models

- RBA4171-100** Shower Curtain Rail, Stainless Steel 1635mm x 1500mm
- RBA4171-101** Kit Complete: Rail + 2 curtains + 24 hooks

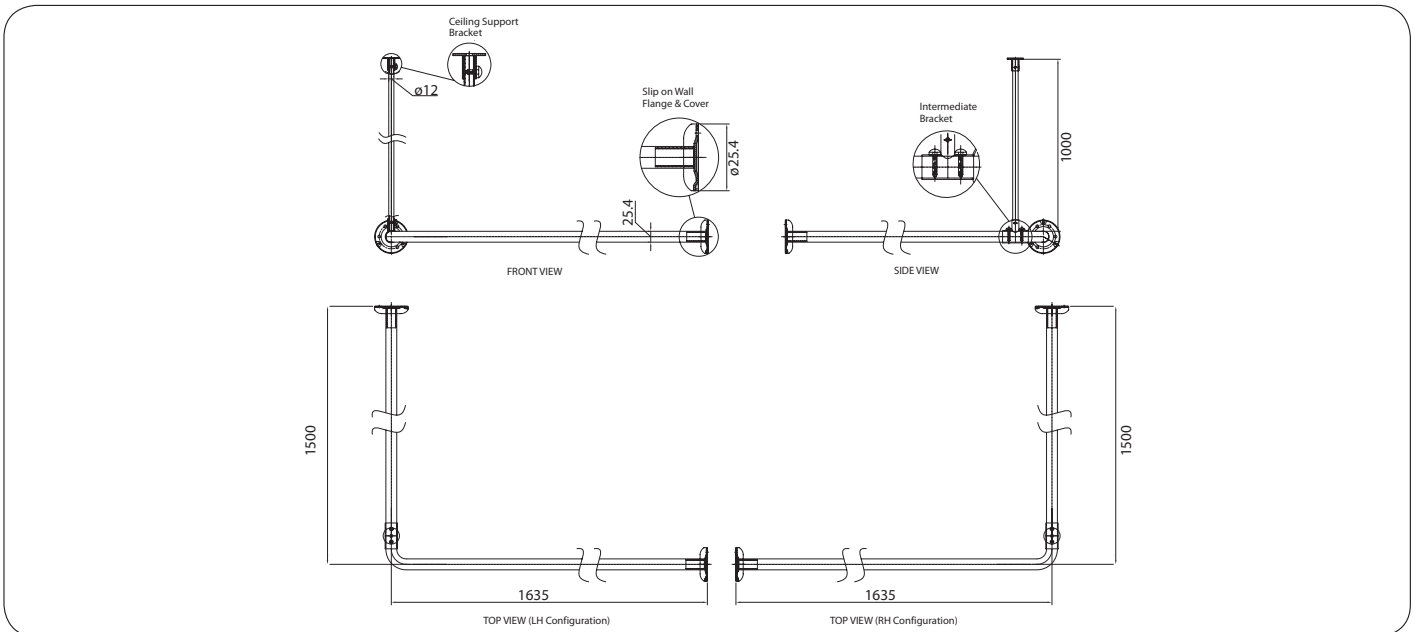
Related Products

- B204.1** Stainless Steel Hook
- B204.3** Heavy Duty Vinyl Shower Curtain [2 required]
- RBA4110-926** Shower 'T' Grab Rail w/ Handset, Slider & Hose, RH [Use RBA4110-927 for LH]

Installation

Unit is supplied flat packed and is reversible so that the longer section can be installed on either side. Where required, cut down ends of rail and/or hanger rod to desired size/height and if installing to meet AS1428.1-2009 confirm mounting heights and local building codes. Shower Curtain Rails are no stronger than the anchors or walls to which they are attached, and therefore, must be firmly secured in order to support the loads for which they are intended.

Important: Installation instructions and current rough-in details should be furnished with each fixture. Do not rough in without certified dimensions. Dimensions are subject to manufacturer's tolerance of +/-10mm.



As improvements in the design and performance of RBA products are continuous, specifications may be subject to change without notice. The illustrations and descriptions herein are applicable to production as of the date of this Technical Data Sheet. Revised 09/15 © 2015 by RBA Group TD/Model RBA4171-100/0915