

## Kilargo IS5111si Sweep Action Seal

[Click here to view on website](#)



SKU	Length
LO-IS5111SI-1000CA	1000mm
LO-IS5111SI-2250CA	2250mm
LO-IS5111SI-2500CA	2500mm

### DESCRIPTION

These silicone sweep seals are designed to be used around the head and jambs, door bottom and meeting stiles of single or double swing doors, revolving, tilt-up and roller doors. These seals help protect against ambient and medium temperature smoke, draught and dust, and weather penetration. The slim line carriers are aesthetically angled to avoid dust build-up. These seals provide excellent sealing solutions for pivot action smoke doors and clean room applications.

### Gap Size

- Min. 9mm / max. 12mm

### Standard Lengths

- 1000mm
- 2250mm
- 2500mm
- Also available in: 250mm increments from 1000mm to 5000mm (Special Order Only)

### Standard Finishes

- Silver anodised aluminium carrier with grey silicone fin
- (Black anodised aluminium carrier with black silicone fin to special order)

### Fixing

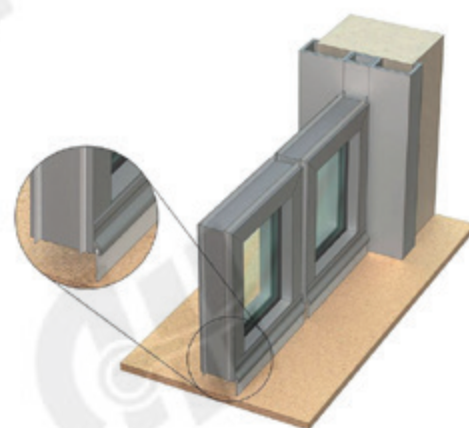
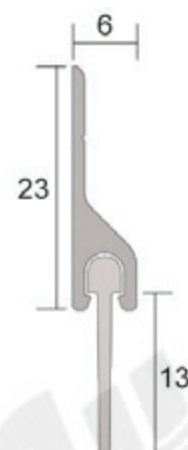
- Silicone sweep seals (within carriers) can be screw-fixed or self-adhered to the desired surface
- Fixing screws and aggressive backing tape are supplied

### Approvals

- Fire tested to AS1530 Part 4 in accordance with AS1905 Part 1
- Medium temperature smoke leakage approvals to AS1530 Part 7 available on proprietary door assemblies for IS5111si
- Conforms with NCC Specification C3.4 smoke sealing requirements
- Acoustically tested in accordance with AS1191, ISO140.3 & ISO10140-2

### SPECIFICATION

Colour	Silver
Includes Fixing Screws	Yes
Self Adhesive	Self Adhesive Backing
Suitable for Smoke Doors	Medium temperature smoke leakage tests to AS1530 Part 7 available on proprietary door assemblies. Conforms with NCC Specification C3.4 smoke sealing requirements.
Fire tested, check with manufacturer for further details.	Fire tested to AS1530 Part 4 in accordance with AS1905 Part 1
Acoustic Rating to AS1191 and ISO140.3	Acoustically tested in accordance with AS1191, ISO140.3 & ISO10140-2
Max Door Gap	12mm
Finish	Aluminium & black brush
Material	Aluminium and black nylon brush



## Contact

**Customer Service:** 1800 555 600  
**Locksmith Services:** 1800 555 700  
**Email:** [online@accesshardware.com.au](mailto:online@accesshardware.com.au)  
**Website:** [www.accesshardware.com.au](http://www.accesshardware.com.au)

## Disclaimer

*The specifications on our website are often provided to us by our manufacturers, provided as guidance only. While Access ensures it deals with reputable manufacturers, it cannot verify the accuracy of every claim made by them about their products as manufacturers often reserve the right to make changes without notice. To the extent permitted by law, We are not liable in respect of any claims made on this website in respect of any specification or claim by a manufacturer for its product.*

Brush Size	13mm
Min Door Gap	9mm
Warranty	2 years from date of sale

## CATEGORIES

Door Seals / Sweep Action Seals

---

## Contact

**Customer Service:** 1800 555 600

**Locksmith Services:** 1800 555 700

**Email:** [online@accesshardware.com.au](mailto:online@accesshardware.com.au)

**Website:** [www.accesshardware.com.au](http://www.accesshardware.com.au)

## Disclaimer

*The specifications on our website are often provided to us by our manufacturers, provided as guidance only. While Access ensures it deals with reputable manufacturers, it cannot verify the accuracy of every claim made by them about their products as manufacturers often reserve the right to make changes without notice. To the extent permitted by law, We are not liable in respect of any claims made on this website in respect of any specification or claim by a manufacturer for its product.*