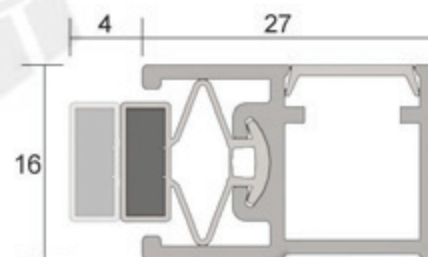


Kilargo IS6030 Magnetic Seal

[Click here to view on website](#)



SKU	Length
LO-IS6030-1000CA	1000mm
LO-IS6030-2250CA	2250mm
LO-IS6030-2500CA	2500mm
LO-IS6030-SDS-CA	Single Door Set (1 x 1000mm, 2 x 2100mm)
LO-IS6030-LSDS-CA	Long Single Door Set (1 x 1000mm, 2 x 2750mm)
LO-IS6030-DDS-CA	Double Door Set (3 x 2100mm)



DESCRIPTION

The IS6030 compact magnetic seal is designed to be fitted to the head and jambs of metal clad door perimeters in lieu of door stops.

This refrigeration-type magnetic seal has sufficient magnetic strength that latches may not be required.

Standard Lengths

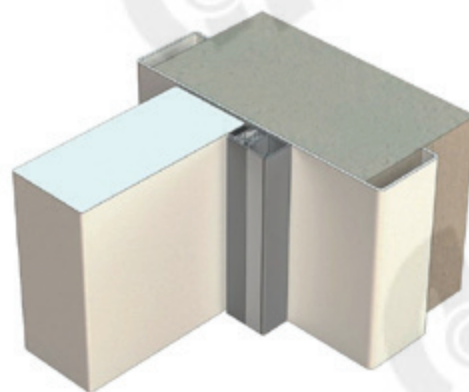
- 1000mm
- 2250mm
- 2500mm
- Also available in: 250mm increments from 1000mm to 3000mm (Special Order Only)

Standard Colours

- Silver anodised aluminium with grey gasket and cover strip

Approvals

- Acoustic ratings to AS1191 and ISO140.3



SPECIFICATION

Includes Fixing Screws	Yes
Fire tested, check with manufacturer for further details.	NA
Acoustic Rating to AS1191 and ISO140.3	Acoustically tested in accordance with AS1191, ISO140.3 & ISO10140-2
Max Door Gap	NA
Min Door Gap	NA
Finish	Silver anodised aluminium carrier with grey silicone gasket and cover strip
Suitable for Smoke Doors	NA
Material	Aluminium & Silicone
Warranty	2 years from date of sale

CATEGORIES

Door Seals / Magnetic Seals

Contact

Customer Service: 1800 555 600
Locksmith Services: 1800 555 700
Email: online@accesshardware.com.au
Website: www.accesshardware.com.au

Disclaimer

The specifications on our website are often provided to us by our manufacturers, provided as guidance only. While Access ensures it deals with reputable manufacturers, it cannot verify the accuracy of every claim made by them about their products as manufacturers often reserve the right to make changes without notice. To the extent permitted by law, We are not liable in respect of any claims made on this website in respect of any specification or claim by a manufacturer for its product.