

Raven RP28 Threshold Plate

[Click here to view on website](#)



SKU	Length
RP28-1000CA	1000mm
RP28-2000CA	2000mm
RP28-3000CA	3000mm

DESCRIPTION

RP28 is a wide, heavy duty threshold plate with a ribbed profile and integral sill gaskets. They are ideal for use with pivot hinge doors.

Can be used in conjunction with Raven door bottom seals to prevent rain, draughts, noise and smoke infiltration.

Location: Door sill.

Finish: Satin clear (silver) or bronze anodised aluminium (25Åµm).

Fixing: Screw fix. Colour matched zinc plated, cross recess head CSK S.T. screws supplied.

Seal: RP404a. Grey flexible PVC.

Sizes: Available in stock lengths.

Approvals

Access & Mobility NZ: NZ BC Compliance Doc. D1/AS1 1.3.2. Fire Approved

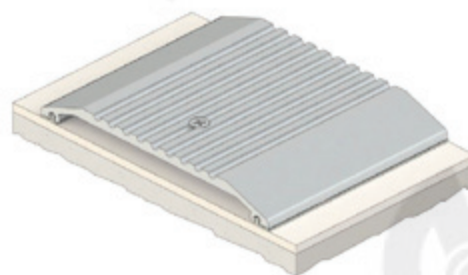
UK/EU: Approved Document M.

Fire AUS/NZ: NCC Spec. C3.4. AS1530.4 & AS/NZS 1905.1. NZ BC Compliance Doc. C/AS1 6.19.2(a) & App. C6.1.1.

UK/EU: Approved Document B. BS 476 Pt. 20 & 22 (similar to BS EN 1634-1).

FRL & FRR-/240/30 and FD120. Fire Approved

Fire Approved when used with a BAL rated door bottom seal in accordance with AS 3959.



SPECIFICATION

Fire tested, check with manufacturer for further details.	Yes
Material	Aluminium
Finish	Clear Anodised
AS1428 Compliant	No
Includes Fixing Screws	Yes
Warranty	2 Years
Gradient	NA
Depth	127mm
Height	13mm

CATEGORIES

Door Seals / Threshold Plates & Ramps

Contact

Customer Service: 1800 555 600

Locksmith Services: 1800 555 700

Email: online@accesshardware.com.au

Website: www.accesshardware.com.au

Disclaimer

The specifications on our website are often provided to us by our manufacturers, provided as guidance only. While Access Hardware ensures it deals with reputable manufacturers, it cannot verify the accuracy of every claim made by them about their products as manufacturers often reserve the right to make changes without notice. To the extent permitted by law, We are not liable in respect of any claims made on this website in respect of any specification or claim by a manufacturer for its product.