

## Raven RP29 Threshold Plate

[Click here to view on website](#)



| SKU         | Length |
|-------------|--------|
| RP29-1000CA | 1000mm |
| RP29-2000CA | 2000mm |
| RP29-2500CA | 2500mm |
| RP29-3000CA | 3000mm |

### DESCRIPTION

RP29 is a wide, heavy duty threshold plate with a ribbed profile and integral sill gaskets. They are ideal for use with pivot hinge doors.

Can be used in conjunction with Raven door bottom seals to prevent rain, draughts, noise and smoke infiltration.

Location: Door sill.

Finish: Satin clear (silver) or bronze anodised aluminium (25Åµm).

Fixing: Screw fix. Colour matched zinc plated, cross recess head CSK S.T. screws supplied.

Seal: RP404a. Grey flexible PVC.

Sizes: Available in stock lengths.

### Approvals

Access & Mobility NZ: NZ BC Compliance Doc. D1/AS1 1.3.2. Fire Approved

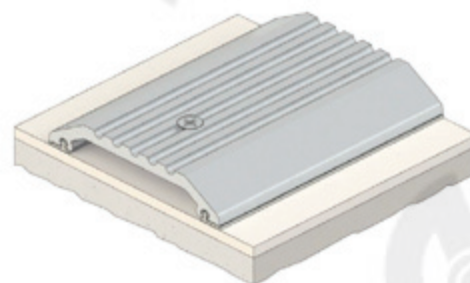
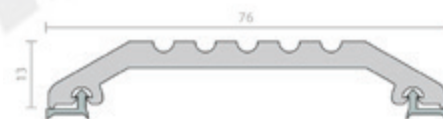
UK/EU: Approved Document M.

Fire AUS/NZ: NCC Spec. C3.4. AS1530.4 & AS/NZS 1905.1. NZ BC Compliance Doc. C/AS1 6.19.2(a) & App. C6.1.1.

UK/EU: Approved Document B. BS 476 Pt. 20 & 22 (similar to BS EN 1634-1).

FRL & FRR-/240/30 and FD120. Fire Approved

Fire Approved when used with a BAL rated door bottom seal in accordance with AS 3959.



### SPECIFICATION

|   |                |
|---|----------------|
| Fire tested, check with manufacturer for further details. | Yes            |
| Material  | Aluminium      |
| Finish  | Clear Anodised |
| AS1428 Compliant  | No             |
| Includes Fixing Screws                                    | Yes            |
| Warranty  | 2 Years        |
| Gradient  | NA             |
| Height  | 13mm           |
| Depth   | 76mm           |

### CATEGORIES

Door Seals / Threshold Plates & Ramps

## Contact

**Customer Service:** 1800 555 600

**Locksmith Services:** 1800 555 700

**Email:** [online@accesshardware.com.au](mailto:online@accesshardware.com.au)

**Website:** [www.accesshardware.com.au](http://www.accesshardware.com.au)

## Disclaimer

The specifications on our website are often provided to us by our manufacturers, provided as guidance only. While Access ensures it deals with reputable manufacturers, it cannot verify the accuracy of every claim made by them about their products as manufacturers often reserve the right to make changes without notice. To the extent permitted by law, We are not liable in respect of any claims made on this website in respect of any specification or claim by a manufacturer for its product.