

## Raven RP89 Door Bottom Sweep Seal- 1000mm

[Click here to view on website](#)

### SKU

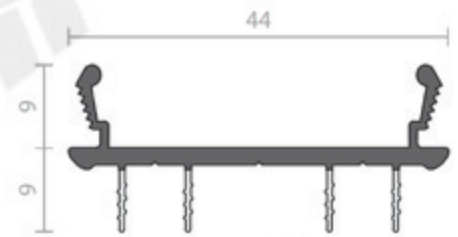
RP89-1000



### DESCRIPTION

A rigid and flexible co-polymer weather and energy seal. RP89 suits leading proprietary brand, hollow channel aluminium door suites. Concealed in the bottom of aluminium butt hinged doors or the bottom and head of pivot doors, RP89's unique design accommodates OEM and retrofit applications.

When used in conjunction with a Raven threshold plate an excellent weather and energy seal is achieved.



Location: Bottom or top of 40-45mm hollow channel aluminium doors. Suits butt hinged and pivot hinged systems. Sliding doors (user determined).

Min/Max Gap: 6mm to 9mm.

Note: A Raven threshold plate is recommended to clear floor surface.

Fixing: Snap fit design with end support lugs and screws supplied.

Seal: Black rigid and grey flexible UV stabilised co-polymer.

Sizes: 1000mm.

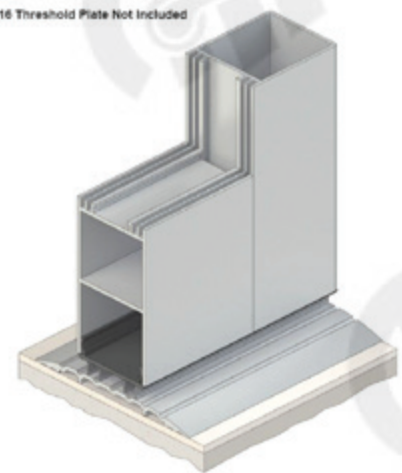
### Approvals

Energy NCC Pt. 3.12.3.3 & J3.4.

Durability Tested to over 500,000 operating cycles without failure.

Registered Design.

RP116 Threshold Plate Not Included



### SPECIFICATION

|   |                            |
|---|----------------------------|
| Fire tested, check with manufacturer for further details. | No                         |
| Material  | Aluminium                  |
| Includes Fixing Screws                                    | Yes                        |
| Warranty  | 2 Years                    |
| Finish  | Various                    |
| Brush Size  | NA                         |
| Acoustic Rating to AS1191 and ISO140.3                    | No                         |
| Suitable for Smoke Doors                                  | NA                         |
| Max Door Gap  | Dependant upon application |
| Min Door Gap  | Dependant upon application |

### CATEGORIES

Door Seals / Door Bottom Seals / Door Bottom Sweep Seals

## Contact

**Customer Service:** 1800 555 600

**Locksmith Services:** 1800 555 700

**Email:** [online@accesshardware.com.au](mailto:online@accesshardware.com.au)

**Website:** [www.accesshardware.com.au](http://www.accesshardware.com.au)

## Disclaimer

The specifications on our website are often provided to us by our manufacturers, provided as guidance only. While Access ensures it deals with reputable manufacturers, it cannot verify the accuracy of every claim made by them about their products as manufacturers often reserve the right to make changes without notice. To the extent permitted by law, We are not liable in respect of any claims made on this website in respect of any specification or claim by a manufacturer for its product.