

SPECIFICATION

EZ Fill™ Top Fill Multi-Feed Kit for EZ Fill™ Top Fill Multi-Feed Heads shall hold 6L of liquid soap with pH in range 7 ± 1.5 and viscosity in range 100-3800 cP (mPa·s) or liquid foaming soap with pH in range 7 ± 1.5 and maximum viscosity of 100 cP (mPa·s) and without abrasive or particulate content to supply up to six (6) individual EZ FILL™ Top Fill Multi-Feed Heads (see 0390-(n) or 0393-(n) specification sheets for details). Multi-Feed tank shall be leak-proof seamless molded translucent plastic to show quantity of soap remaining at any time and will be located under counter, either on floor of base cabinet or in wall mounting bracket (provided). Tank shall be connected to under-counter soap distribution tubing (provided with separately specified soap dispensers) and EZ FILL™ Top-Fill Port flexible fiber-reinforced soap fill hose (provided) with single coupling. Unused soap distribution ports shall be closed with blanking fittings (provided). EZ FILL™ Top-Fill Port and cover shall have highly polished chrome plated finish over all exposed surfaces and flange shall have an O-ring to seal against vanity top surface to prevent liquid leaks through counter top. Tank shall be filled by opening fill port cover with service wrench (provided) and loading bulk soap. Concealed air vent hole and vent tube with clip shall allow pumps (supplied separately) to provide smooth soap delivery performance. EZ FILL™ Top-Fill Port shall mount on vanity through 32.5mm Dia hole min to 35mm Dia max and shall accommodate vanity thickness up to 51mm. Owner's Manual and Installation Guide (OM & IG) shall be provided with unit in carton.

OPTIONS

For port cover in Matte Black finish use suffix **-41**. For port cover in Satin Gold finish use suffix **-G**.

INSTALLATION

See and review 0390 OM & IG provided with unit in box prior to beginning installation. Mount EZ FILL™ Top Fill Port to vanity with rubber O-ring (under escutcheon), rubber washer, SS washer and basin nut (supplied) through 33,4mm Dia mounting hole in deck (provided by others) within 264 cm of furthest dispenser head so that dispenser supply tubing (provided with soap pumps) will reach to bottom of tank. Place tank on vanity cabinet floor or mount tank with bracket (provided) in convenient location under vanity with two (2) screws and wall anchors (supplied with bracket). Connect soap supply flex tubing fill hose (provided attached to EZ FILL™ tank transfer fitting) to bottom of fill port fitting and screw transfer fitting onto Multi-feed tank. Connect all dispenser heads soap pump supply tubes to individual transfer ports so that each tube end is just above bottom of tank or install blank plugs to seal unused ports. Fill tank from EZ FILL™ Top-Fill Port with appropriate pH level and viscosity non-abrasive soap to correct level and test system for operation.

OPERATION

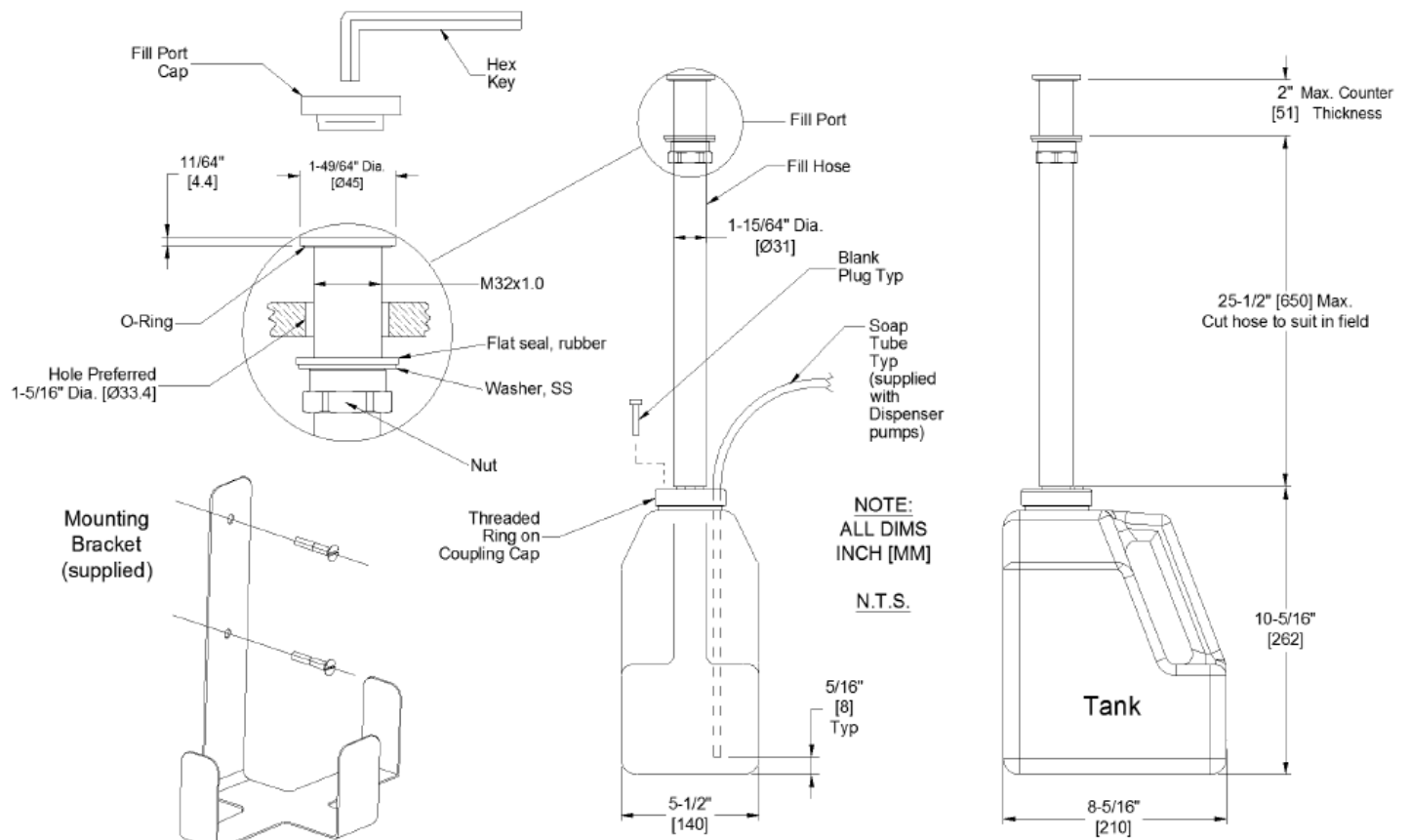
System shall allow filling soap reservoir from top of vanity without requiring removal of tank under vanity. Up to six (6) individual dispensers will draw soap as required to operate until supply is depleted. Unused transfer ports are blocked with solid plugs (provided) to prevent overflow, contamination and evaporation. Soap is manually replenished on service interval determined by maintenance schedule. Vent tube placed with angled cut end directly under counter surface prevents siphoning and facilitates smooth suction of soap by pumps to reduce priming & feed time. See OM & IG for complete description of Features and Operations.

WARRANTY

2 years.

EZ Fill™ Top Fill Multi-Feed Kit shall be Model No. 10-0390 as manufactured by ASI JD MacDonald.

EZ Fill™ Top Fill Multi-Feed Kit Model No. 10-0390



ASI JD MacDonald reserves the right to, and does from time to time, make changes and improvements in design and dimensions. The photographs and line drawings of the products in this flyer are representational only. All dimensions are in millimetres unless otherwise stated.