

## RP96



A low profile threshold plate that can be used in conjunction with Raven door bottom seals to prevent rain, draught, noise and smoke infiltration.

**Location:** Door sill.

**Finish:** Satin clear (silver) or bronze anodised aluminium (25µm).

**Fixing:** Screw fix or builders adhesive for concealed fixing (user determined). Colour matched zinc plated, cross recess head CSK S.T. screws supplied.

**Sizes:** Available in stock lengths.

### Approvals

UL R37913

ANSI/BHMA A156.21

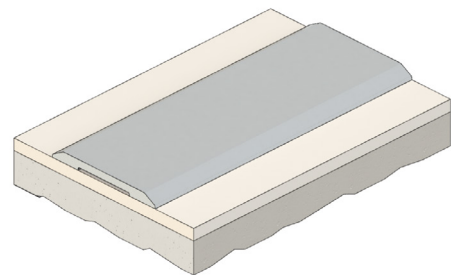
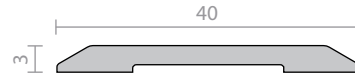
**Access & Mobility AUS/NZ:** NCC D2.15 & D3.3. AS1428.1. NZ BC Compliance Doc. D1/AS1 1.3.2.  
**UK/EU:** Approved Document M.

**Fire AUS/NZ:** NCC Spec. C3.4. AS1530.4 & AS/NZS 1905.1. NZ BC Compliance Doc. C/AS1 6.19.2(a) & App. C6.1.1.

**UK/EU:** Approved Document B. BS 476 Pt. 20 & 22 (similar to BS EN 1634-1).

**FRL & FRR-/240/30 and FD240.**

**BAL  $\leq FZ$**  when used with a BAL rated door bottom seal in accordance with AS 3959.



## RP98



A heavy duty threshold ramp with a ribbed design which can be positioned back to back to form a two way threshold ramp conforming to NCC Pt. D2.15 Thresholds (b).

Can be used in conjunction with Raven door bottom seals to prevent rain, draughts, noise and smoke infiltration. Suitable for use with most floor pivots.

Ideal for commercial shop fronts providing a neat ramp detail between carpets or tiles at door ways.

Can also be used to provide a ramped frame for internal door mats.

**Location:** Door sill.

**Finish:** Satin clear (silver) anodised aluminium (25µm).

**Fixing:** Screw fix. Zinc plated, cross recess head CSK S.T. screws supplied. Can be fastened with builders adhesive for concealed fixing.

**Sizes:** Available in stock lengths. Specify longer length than doorway to allow for neat installation around door frame.

### Approvals

UL R37913

ANSI/BHMA A156.21

**Access & Mobility AUS/NZ:** NCC D2.15 & D3.3. AS1428.1. NZ BC Compliance Doc. D1/AS1 1.3.2.  
**UK/EU:** Approved Document M.

**Fire AUS/NZ:** NCC Spec. C3.4. AS1530.4 & AS/NZS 1905.1. NZ BC Compliance Doc. C/AS1 6.19.2(a) & App. C6.1.1.

**UK/EU:** Approved Document B. BS 476 Pt. 20 & 22 (similar to BS EN 1634-1).

**FRL & FRR-/240/30.**

**BAL  $\leq FZ$**  when used with a BAL rated door bottom seal in accordance with AS 3959.

