



Your business can earn
Qantas Points with us*.

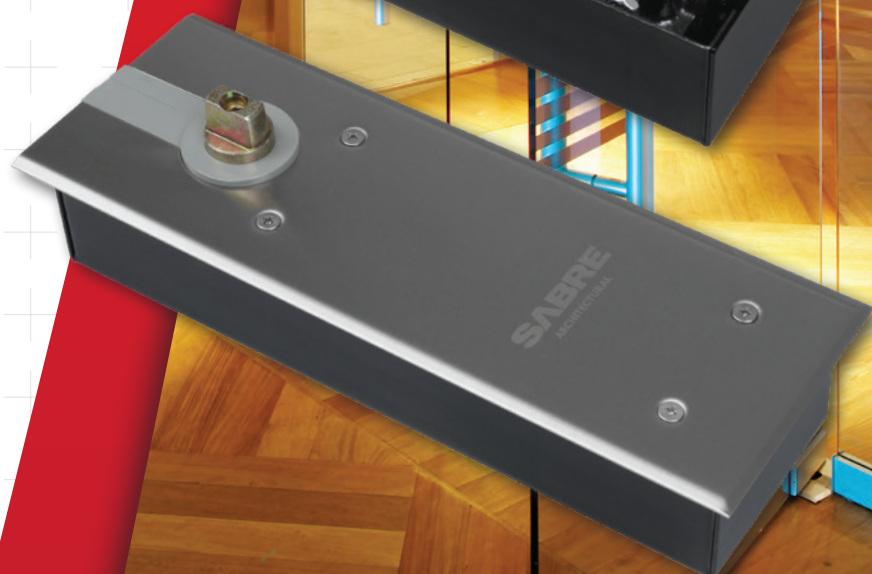
*Find out more by calling Access Hardware customer service on 1800 555 600 or visit accesshardware.com.au. T&Cs apply.

qantasbusinessrewards.com/terms and accesshardware.com.au/qbr

950 FLOOR SPRINGS

FOR USE ON TIMBER, METAL AND GLASS DOORS

- Functions available as 90° hold open or non hold open
- Suitable for single or double action doors
- Adjustable spring strength size 4 to 6
- Adjustable latching and closing speeds
- Maximum 160° opening angle
- Suitable for door widths up to 1450mm
- Maximum door weight 300kg
- Interchangeable spindles available for additional door clearance
- Stainless steel cover plate and heavy duty bottom door strap are included



950 FLOOR SPRINGS

SPECIFICATIONS

The Sabre 950 Adjustable Strength Floor Spring is designed to handle heavy doors with a maximum weight capacity of 300kgs. The 950 can be used for controlling single and double action doors up to 1450mm wide.

The 950 comes complete with a stainless steel cover plate to conceal the floor spring body and has optional spindle heights that can be used for varying door clearances that may be required. It has a robust design and has easy adjustment features. The 950 includes a highly effective

cam action mechanism, making it easier for the user to open the door, whilst maintaining strength to also close the door.

Note: Top Pivots are not supplied as standard with the 950. Ask your architectural hardware representative for the best pivoting option to suit your door application. Sabre recommends the use of sealing compounds when installed in external and wet area applications.

NON-HOLD OPEN

SAB-FS950-NHO-SSS

- Size 4 to 6 Adjustable
- Maximum Door Weight 300kg
- Up to 1450mm Wide Door
- Interchangeable Standard Spindle Included (5mm Door Clearance)



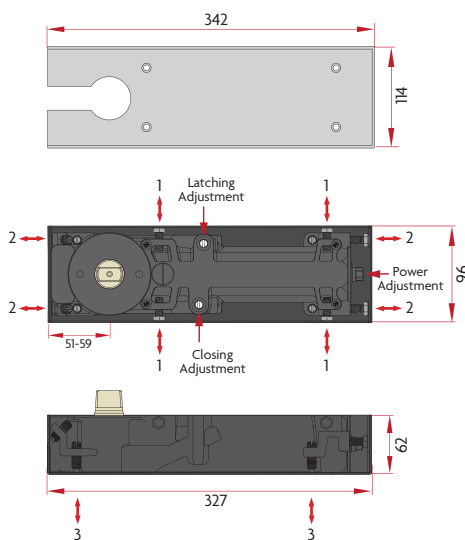
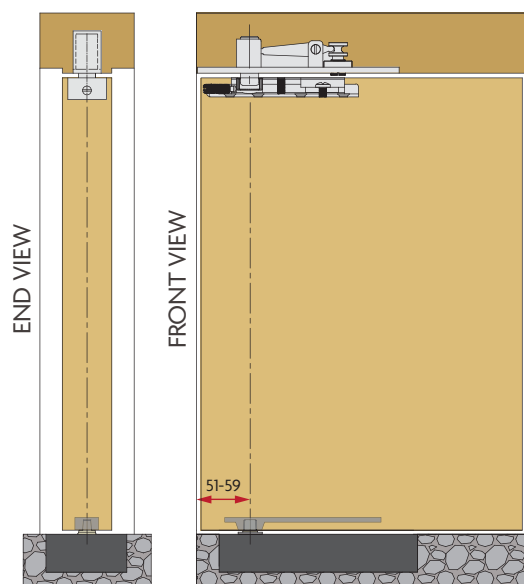
HOLD OPEN 90°

SAB-FS950-90HO-SSS

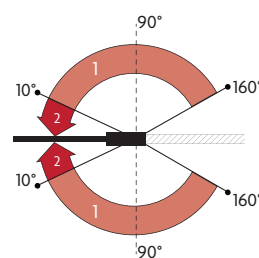
- Size 4 to 6 Adjustable
- Maximum Door Weight 300kg
- Up to 1450mm Wide Door
- Interchangeable Standard Spindle Included (5mm Door Clearance)



DIAGRAMS

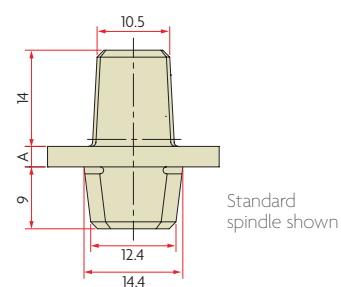


- 1 - Left/Right Adjustment
- 2 - Frame Space Adjustment
- 3 - Height Adjustment



DOOR SWING

1. Closing Range 160° – 10°
2. Latching Range 10° – 0°
- 90° Hold Open (optional)

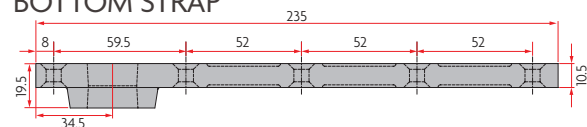


EXTENDED SPINDLE SIZE TABLE

Spindle Size	0mm (Std)	5mm	10mm	15mm	20mm	25mm	30mm	35mm	40mm	50mm
Dimension "A"	3mm	8mm	13mm	18mm	23mm	28mm	33mm	38mm	43mm	53mm
Est. Door Clearance	5mm	10mm	15mm	20mm	25mm	30mm	35mm	40mm	45mm	55mm

(Estimated door clearance is based on using the standard bottom strap supplied with product)

BOTTOM STRAP



PRODUCT INCLUSIONS

- Stainless Steel Cover Plate
- Mounting Box
- Bottom Strap
- Standard Height Spindle

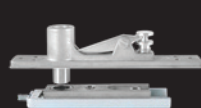
ACCESSORIES

Extended spindles are sold separately ranging in sizes from 5mm to 50mm

RELATED PRODUCTS



590 Series Narrow Style Deadlocks



SAB-TC-866-SSS
Adjustable Top Centre



Entrance Handles