

RP27



A heavy duty threshold plate designed for sill and carpet edge protection.

Can be used in conjunction with Raven door bottom seals to prevent rain, draughts, noise and smoke infiltration.

Location: Door sill.

Finish: Satin clear (silver) anodised aluminium (25µm).

Fixing: Screw fix. Colour matched zinc plated, cross recess head CSK S.T. screws supplied.

Sizes: Available in stock lengths.

Approvals

ANSI/BHMA A156.21

Access & Mobility NZ: NZ BC Compliance Doc. D1/AS1 1.3.2.

UK/EU: Approved Document M.

Fire AUS/NZ: NCC Spec. C3.4.

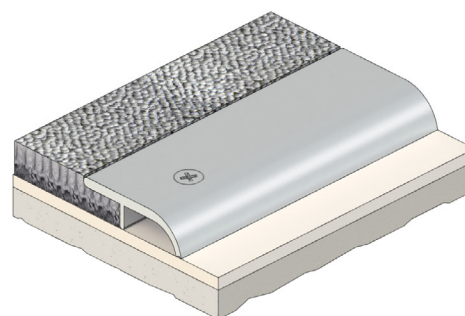
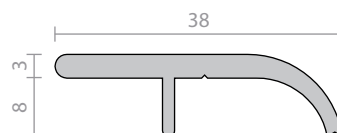
AS1530.4 & AS/NZS 1905.1. NZ BC Compliance Doc. C/AS1 6.19.2(a) & App. C6.1.1.

UK/EU: Approved Document B.

BS 476 Pt. 20 & 22 (similar to BS EN 1634-1).

FRL & FRR-/240/30.

BAL \leq FZ when used with a BAL rated door bottom seal in accordance with AS 3959.



RP28



RP28 is a wide, heavy duty threshold plate with a ribbed profile and integral sill gaskets. They are ideal for use with pivot hinge doors.

Can be used in conjunction with Raven door bottom seals to prevent rain, draughts, noise and smoke infiltration.

Location: Door sill.

Finish: Satin clear (silver) anodised aluminium (25µm).

Fixing: Screw fix. Colour matched zinc plated, cross recess head CSK S.T. screws supplied.

Seal: RP404a. Grey flexible PVC.

Sizes: Available in stock lengths.

Approvals

ANSI/BHMA A156.21

Access & Mobility NZ: NZ BC Compliance Doc. D1/AS1 1.3.2.

UK/EU: Approved Document M.

Fire AUS/NZ: NCC Spec. C3.4.

AS1530.4 & AS/NZS 1905.1. NZ BC Compliance Doc. C/AS1 6.19.2(a) & App. C6.1.1.

UK/EU: Approved Document B.

BS 476 Pt. 20 & 22 (similar to BS EN 1634-1).

FRL & FRR-/240/30 and FD120.

BAL \leq FZ when used with a BAL rated door bottom seal in accordance with AS 3959.

