



Your business can earn  
Qantas Points with us\*.

\*Find out more by calling Access Hardware customer service on 1800 555 600 or visit [accesshardware.com.au](http://accesshardware.com.au). T&Cs apply.  
[qantasbusinessrewards.com/terms](http://qantasbusinessrewards.com/terms) and [accesshardware.com.au/qbr](http://accesshardware.com.au/qbr)

# EURO MORTICE LOCK

OPEN CASE SUITABLE  
FOR METAL DOORS

- Available backsets 25mm, 30mm and 35mm
- 85mm pitch (spindle to cylinder)
- Easy to reverse latch (non handed)
- 15mm deadbolt throw
- 10mm latch throw
- Key operated latch retraction
- Operates with fixed cam cylinder (sold separately)
- Universal strike plate
- Suits 7.6mm and 8mm spindle



# EURO MORTICE LOCK

## SPECIFICATIONS

The Sabre Residential Euro Narrow Style Backset Mortice Lock range is suitable for light to medium duty aluminium and metal door applications. Combined with narrow style long plate door furniture this locking option provides you with an economical, yet fashionable security solution for your home. Locking options can be selected by

using double cylinder for extra security or cylinder and turn when convenience is important. No matter what locking option you choose, you can feel confident that the Sabre Residential Euro Mortice Locks will provide you with a security option you need.

### 25MM BACKSET

#### SAB-EML85-25-SSS

- Suitable for 30mm wide narrow style plate furniture
- 85mm pitch
- Operated with fixed cam cylinder



### 30MM BACKSET

#### SAB-EML85-30-SSS

- Suitable for 30mm wide narrow style plate furniture
- 85mm pitch
- Operated with fixed cam cylinder



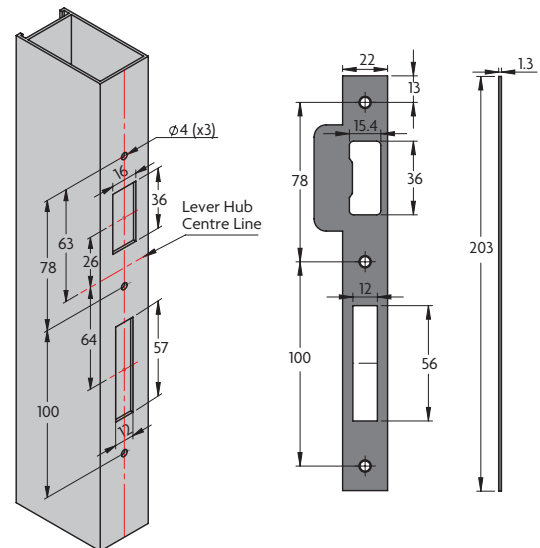
### 35MM BACKSET

#### SAB-EML85-35-SSS

- Suitable for 30mm wide narrow style plate furniture
- 85mm pitch
- Operated with fixed cam cylinder

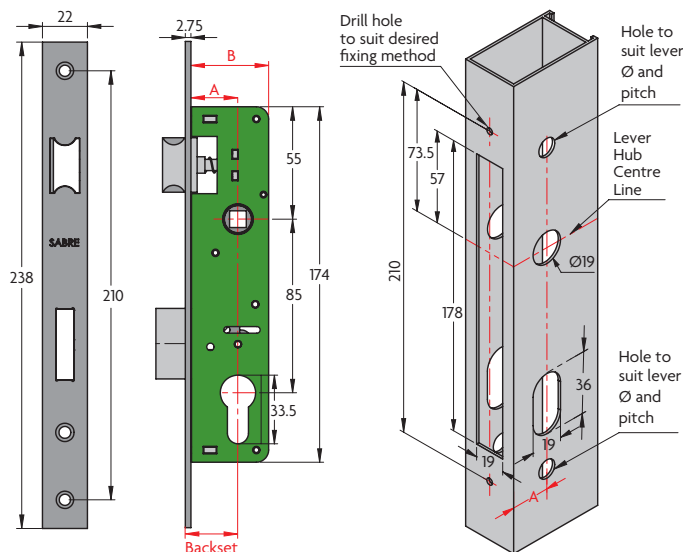


## STRIKE PREP - FACE FIXING

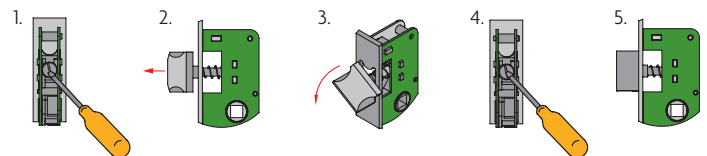


## DOOR PREP - FACE FIXING

Code	Backset	Dimension A	Dimension B
SAB-EML85-25-SSS	25mm	23mm	38mm
SAB-EML85-30-SSS	30mm	28mm	43mm
SAB-EML85-35-SSS	35mm	33mm	48mm



## HANDING



- Unscrew latch handing screw at rear of lock as shown. (Drawing 1)
- Pull out latch past face plate and rotate to suit correct handing. (Drawing 2 and 3)
- Once confirmed tighten handing screw until latch cannot be rotated within face plate. (Drawing 4 and 5)

## RELATED PRODUCTS



SAB-H104FFBB-SSS  
Heavy Duty Hinges



Fast Fix Hinges