

ASSA ABLOY is the global leader in door opening solutions, dedicated to satisfying end-user needs for security, safety and convenience



## Please Note:

This document is provided as a dimensional reference and should not be printed as a drilling template unless it can be correctly scaled to 100% by your printer.

ASSA ABLOY Australia Pty Limited  
235 Huntingdale Road,  
Oakleigh Victoria, 3166  
Australia

[info.au@assaabloy.com](mailto:info.au@assaabloy.com)  
[assaabloy.com.au](http://assaabloy.com.au)

ASSA ABLOY New Zealand Ltd.  
6 Armstrong Road  
Albany, North Shore City, 0632  
New Zealand

[info.nz@assaabloy.com](mailto:info.nz@assaabloy.com)  
[assaabloy.co.nz](http://assaabloy.co.nz)



# 001TOUCH™

INSTALLATION INSTRUCTIONS

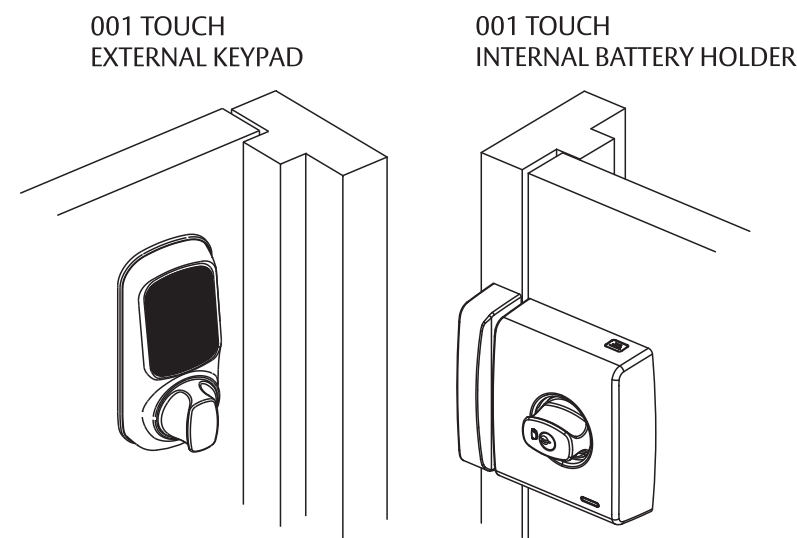
## CONTENTS

- External Keypad Assembly
- 001 Deadlatch Lockset
- Battery Pack Mounting Plate
- Battery Pack Cover
- Strike - Standard
- Strike - Small
- Door Frame Strengthenener
- AA Batteries x 4
- RFID Key Cards x 2
- Screws x 4 (001 Lockset)
- Retainer Screw (20, 30 & 40mm) x 2
- Screws x 3 (Battery Pack)
- Screws x 3 (Strike Body)
- Screws x 2 (Door Frame Strengthenener)
- Body Retainer Screw (20, 30 & 40mm) x 2

## TOOLS REQUIRED

- Ø32mm & Ø16mm Spade bit
- Ø4mm & Ø3mm Drill bit
- Electric drill
- Phillips Head screwdriver
- Chisel - 25mm or smaller
- Hammer
- Masking tape
- Pencil

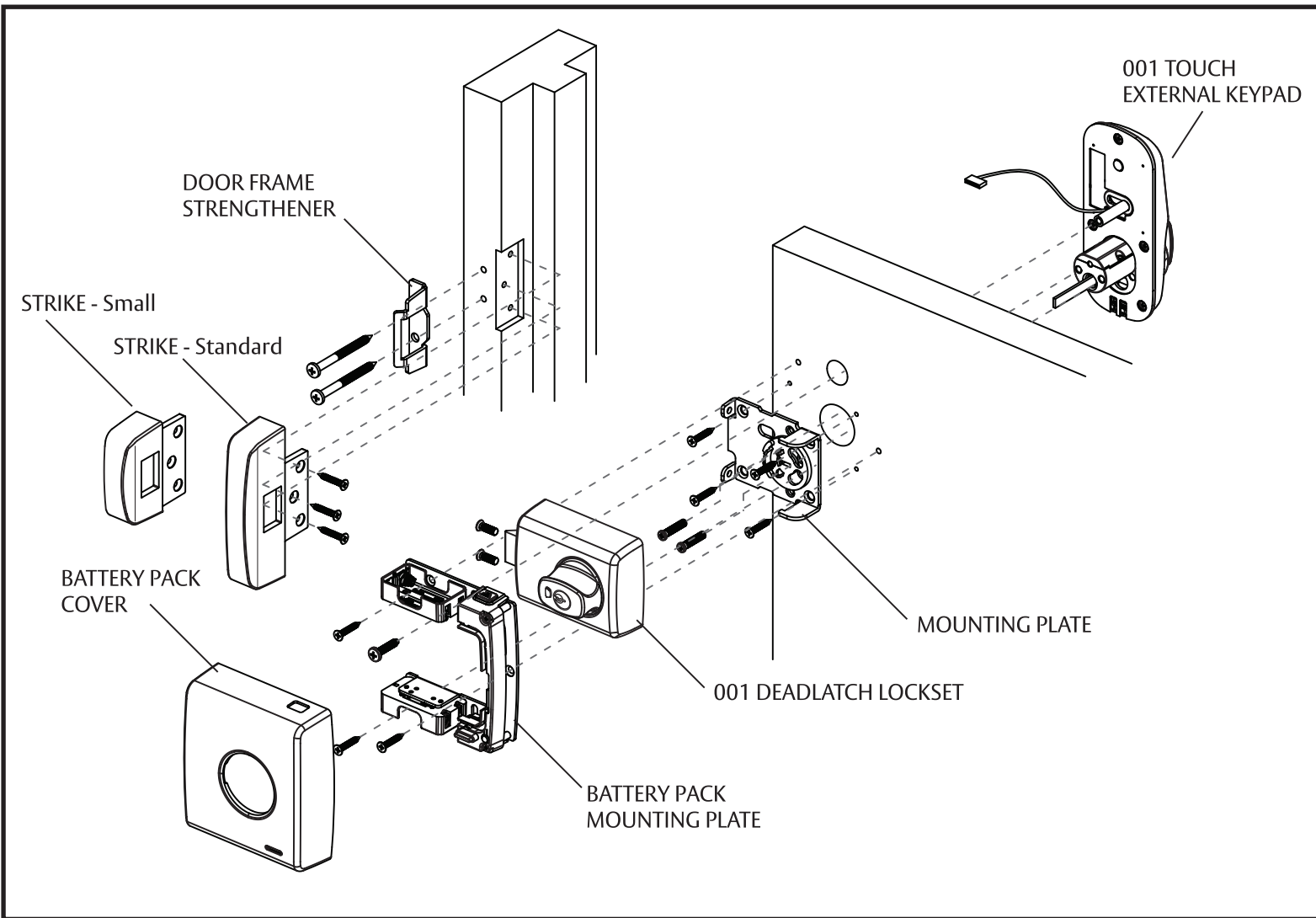
Please ensure that all necessary safety precautions are undertaken when installing this lockset.



Door Thickness - 32mm to 50mm



Refer to 001TOUCH™  
USER GUIDE for lockset  
programming  
and operation



1 DOOR PREPARATION

- Select CLOCKWISE or ANTI-CLOCKWISE side of template to suit door opening direction.
- Position template and prepare door as specified on template.

2 REMOVE MOUNTING PLATE FROM LOCKSET

LOCK CASE

001 DEADLATCH MOUNTING PLATE

- To remove Mounting Plate from the lockset, rotate turnknob fully clockwise to HOLD BACK position.
- Remove two case mounting screws from lock case.
- Take mounting plate out of lock case.

3 CUT CONNECTING BAR

CONNECTING BAR

MARK AND CUT CONNECTING BAR  
5mm PAST DOOR FACE

- Position 001 Touch External Keypad in door as shown.
- Mark Connecting Bar with 5mm protrusion past door face.
- Remove Keypad and CUT CONNECTING BAR TO CORRECT LENGTH.

4 SECURE MOUNTING PLATE

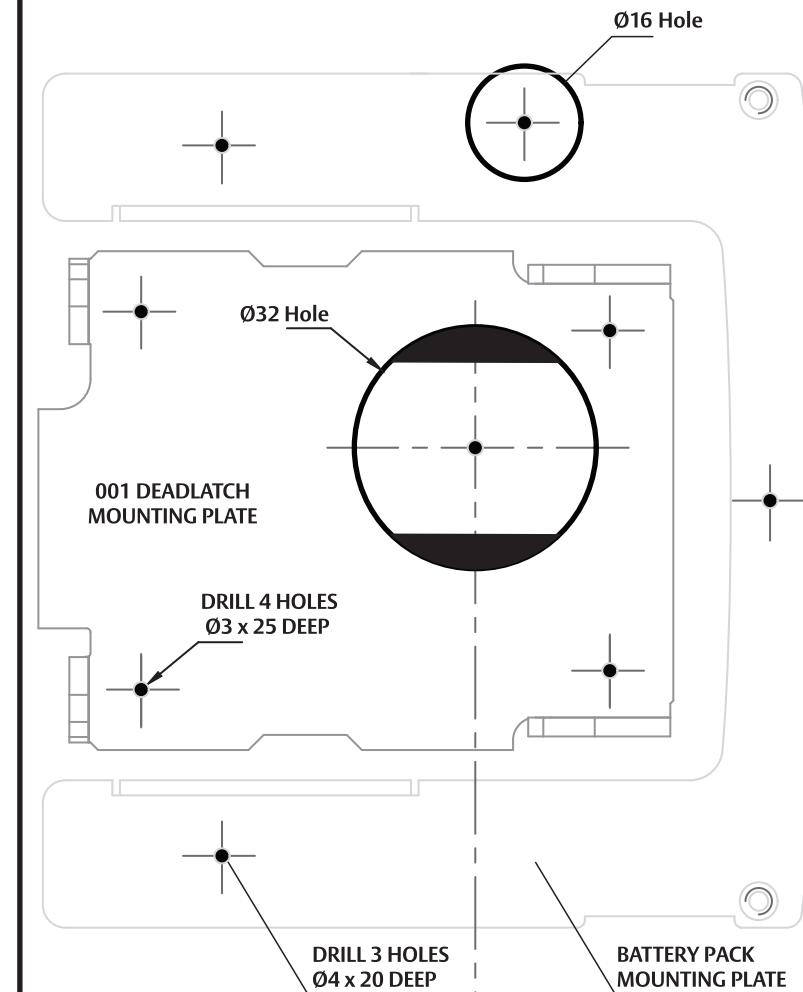
MOUNTING PLATE

- Secure MOUNTING PLATE to door with four wood screws supplied.

## Anti Clockwise Opening Door Template

USE OTHER SIDE OF DOOR FOR CLOCKWISE OPENING DOOR

DOOR EDGE



60mm BACKSET

DOOR EDGE

ALL DIMENSIONS IN MILLIMETRES

TEAR OFF

FOLD LINE

DRILL 2 HOLES  
Ø5 x 63 DEEP

Dor Frame  
Strengthenener  
Template

SINGLE COLOUR - DOUBLE SIDED

SHEET SIZE - 575mm x 295mm

Ø32mm HOLE ON TEMPLATE TO BE PREFORATED

USE OTHER SIDE OF DOOR FOR ANTI-CLOCKWISE OPENING DOOR



DRILL 2 HOLES  
Ø5 x 63 DEEP

FOLD LINE

PERFORATION LINE      ALL DIMENSIONS IN MILLIMETRES

TEAR OFF

TEAR OFF

## TEAR OFF

PERFORATION LINE

## 5



30mm length - 40 to 50mm Doors

- cylinder. Ensure that both screws are tightened firmly and **hub is free to rotate**.

## 6

- Secure Lock Case to mounting plate using the two case mounting screws.

## 7



- Secure BATTERY PACK MOUNTING PLATE around OUT Lock Case, to door with 3 x 15mm Long Self Tapping Screws supplied.

## 8



- LOOM WHEN TIGHTENING.

## 9



- Ensure Battery Pack Cover case engages onto mounting plate.

## 10



- mounting screws. Note :Pre-drill 3mm x 25mm deep for woodscrews.

The global leader in door opening solutions

ASSA ABLOY