

3570 SERIES ELECTRIC MORTICE LOCK MOUNTING INSTRUCTIONS

P/Nb. 3570-5721 30621 0612

HAND OF DOOR ACCORDING TO ENGLISH PRACTICE

RIGHT - HAND DOOR		LEFT - HAND DOOR	
OUTSIDE DOOR OPENING IN	OUTSIDE DOOR OPENING OUT	OUTSIDE DOOR OPENING IN	OUTSIDE DOOR OPENING OUT

- All Lockwood 3570 Series Electric Mortice Locks are mounted in accordance with these instructions. Locks may or may not have cylinders, lever handles, turn knob or emergency button. Disregard instructions referring to the features not required.
- Important : Before drilling door, ensure correct hand is being installed.
- NOTE: CASE DOES NOT need to be opened, to change HAND or FUNCTION of LOCK.

1

HAND OF LOCK

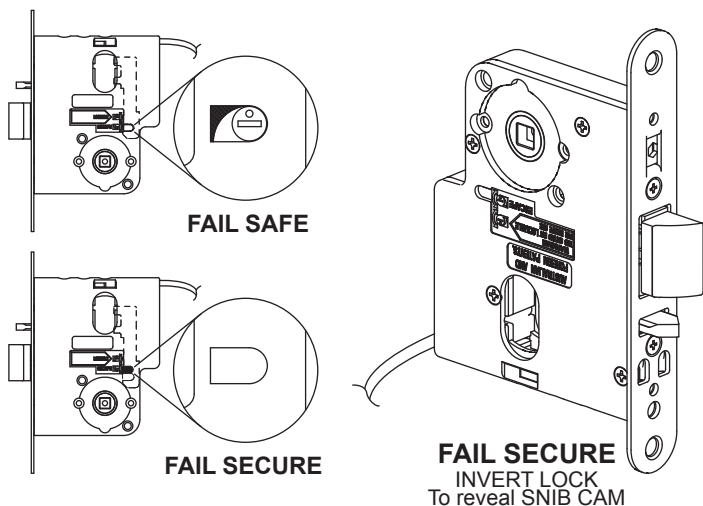
BOLT

- Determine hand of lock required from above hand of door chart.
- Rotate bolt head to suit latching direction.

2

LOCK STATUS

- Ensure Snib Cam is exposed.
- FAIL SAFE locks (Snib Cam is exposed).
For FAIL SECURE locks invert the lock so the Snib Cam screw is exposed.



3

SETTING LOCK HANDING

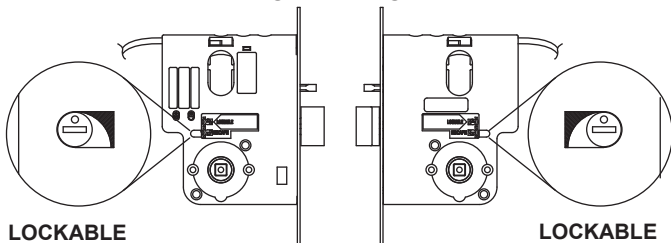
SNIB CAM

- Rotation of the Snib Cam hands the lock. Use a small flat screwdriver to rotate cam if required.

Combination Locks

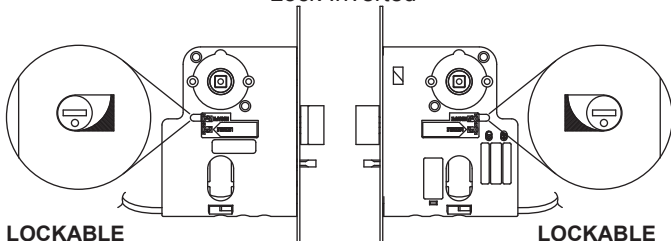
(Both handles can be rotated) DOT to be in the UP position when case is upright.

COMBINATION



COMBINATION (FAIL SECURE)

Lock Inverted



4

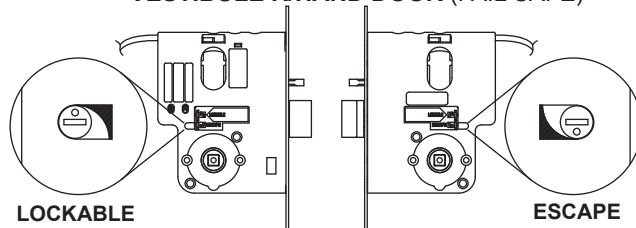
SETTING LOCK HANDING (cont'd)

Vestibule Locks

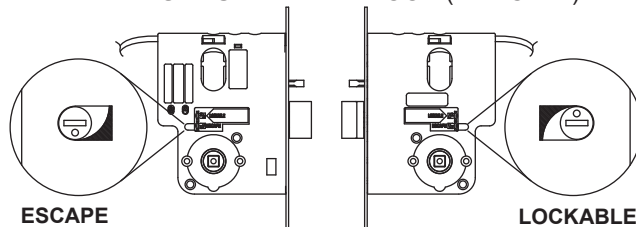
With single action Escape feature.

: DOT to be UP on Lockable side and DOWN on the Escape side when case is upright.

VESTIBULE R/HAND DOOR (FAIL SAFE)

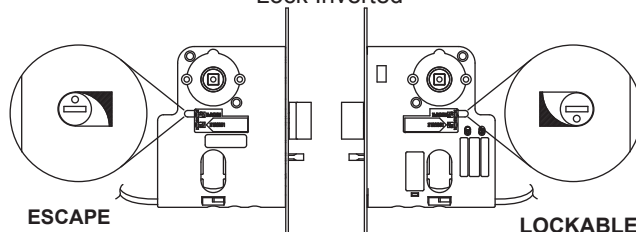


VESTIBULE L/HAND DOOR (FAIL SAFE)



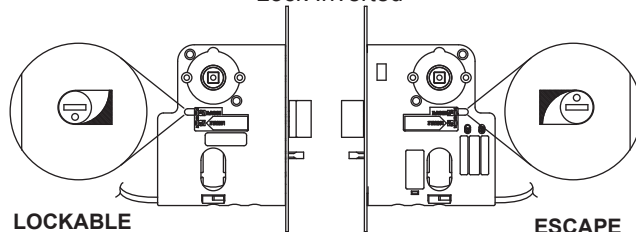
VESTIBULE R/HAND DOOR (FAIL SECURE)

Lock Inverted



VESTIBULE L/HAND DOOR (FAIL SECURE)

Lock Inverted

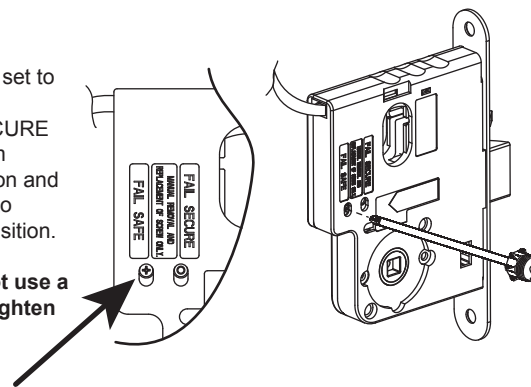


5

SELECTING FAIL SAFE / FAIL SECURE

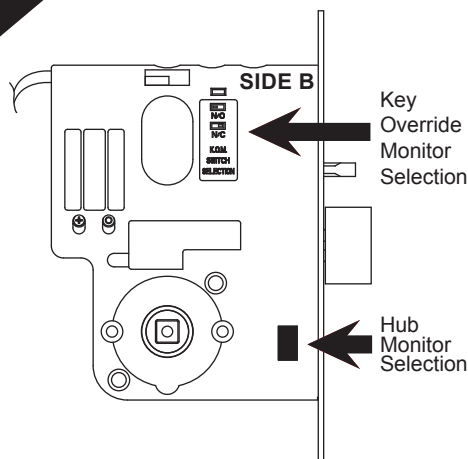
- The lock is factory set to FAIL SAFE.
- To set to FAIL SECURE remove screw from 'FAIL SAFE' position and manually screw into 'FAIL SECURE' position.

WARNING: Do not use a power driver to tighten screw.



6

MONITOR SELECTION



KEY OVERRIDE MONITOR SELECTION
Set the 2 WAY SWITCH to desired setting.

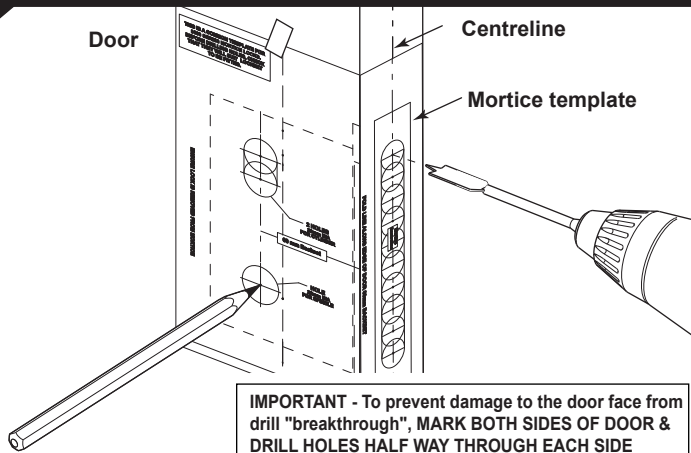
HUB MONITOR SELECTION

- Select normally open, normally closed, Lock Side A or Lock Side B monitoring configuration.

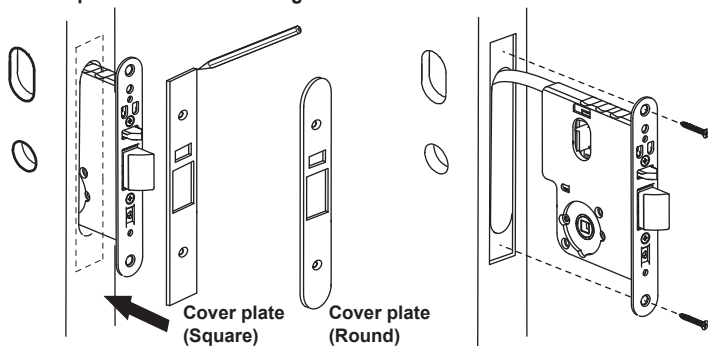
		SWITCH No.				LOCK SIDE	NORMAL FUNCTION
ON	OFF	1	2	3	4		
ON	OFF	■	■	■	■	A	N / C
ON	OFF	■	■	■	■	A	N / O
ON	OFF	■	■	■	■	B	N / C
ON	OFF	■	■	■	■	B	N / O

7

DOOR PREPARATION



- Establish height that lockset will be mounted on door and mark centreline of door thickness on door edge.
- Place Mortice Template on door and align centreline on template with centreline on door. Secure with sticky tape.
- Mark and drill mortice to suit mortice lock depth (90mm).
- Ease out mortice cavity where necessary. Clean out mortice before inserting lock.
- Allow space for extra cable length behind lock for ease of maintenance.



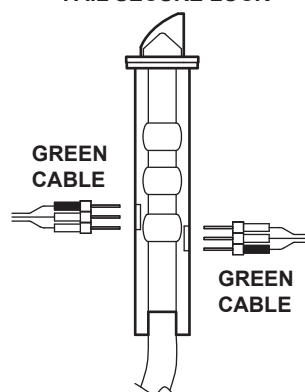
- Insert lock in mortice with Cover Plate on and scribe around Cover Plate for size of recess, ensuring that no foreign matter finds its way into the lock mechanism.
- Remove lock from mortice and chisel recess 4mm deep to receive both front and cover plate. Cover plate must be flush with edge of door.
- Ensure lock is removed from mortice cavity. Fold template along backset fold line. Align EDGE A with bottom of cover plate recess. Establish holes required to suit lock function, mark hole centres accurately, drill and clean holes.
- Drill furniture holes as required.
- Fasten mortice lock into door using mounting screws provided.

8

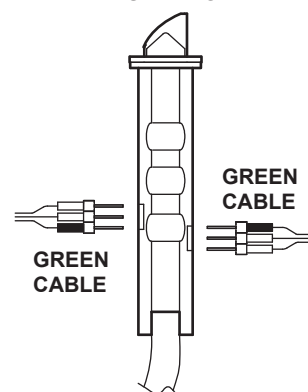
FURNITURE WITH L.E.D.

- Before assembling furniture to door, connect LED cable to 3 pin socket located at TOP of lock body.

FAIL SECURE LOCK



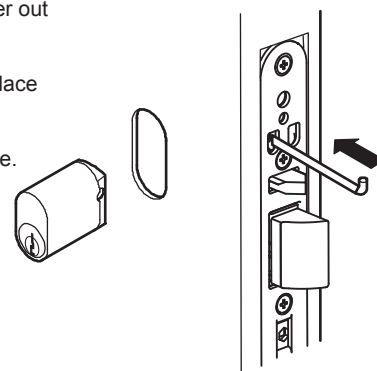
FAIL SAFE LOCK



9

LOCKS WITH CYLINDERS

- Using a small flat screwdriver, lever out Cylinder Hole Plug where fitted.
- Connect power plug from lock to power supply socket and place lock in mortice and insert cylinder.
- Secure cylinder with retainer pin, ensuring pin is flush with front plate.
- Secure lock to door with 2 woodscrews supplied.
- Install cover plate and secure with 2 M4 screws to lock body.



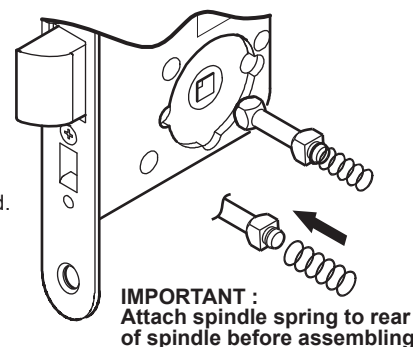
LOCKS WITHOUT CYLINDERS

- Connect power plug from lock to power supply socket and place lock in mortice.
- Secure lock to door with 2 woodscrews supplied.
- Install cover plate and secure with 2 M4 screws to lock body.

10

LOCKS WITH SPINDLES

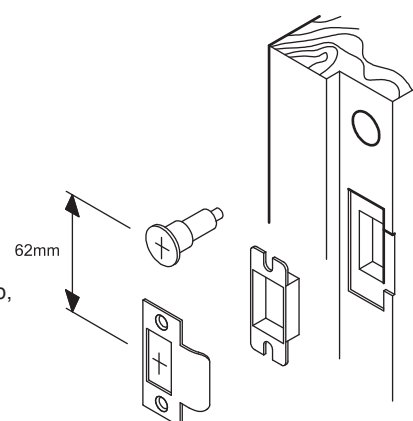
- All locks are supplied with spindles.
- Insert spindle(s) into lock, as required.
- Assemble furniture as required.
- Ensure furniture is not over-tightened.



11

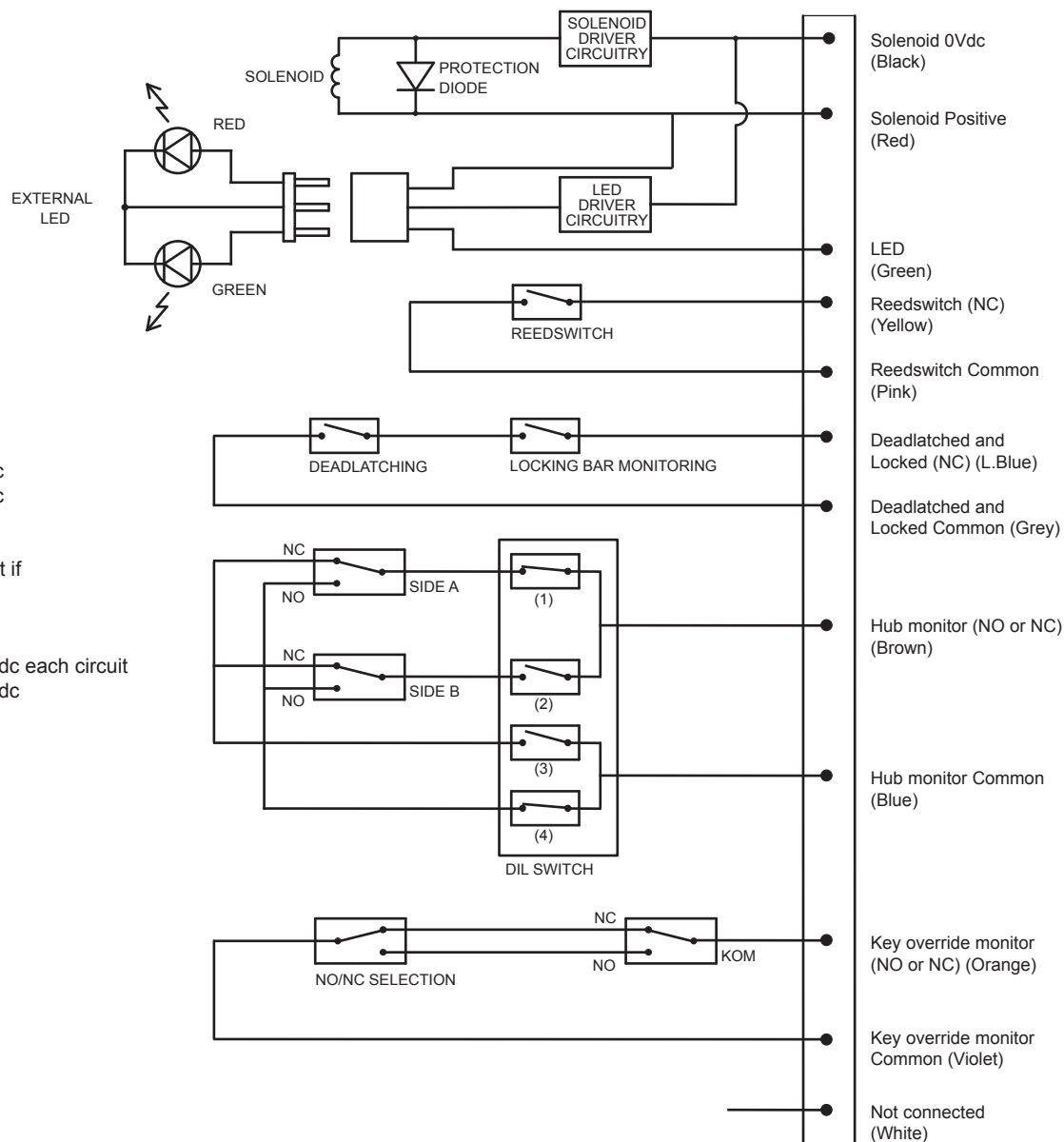
MOUNTING STRIKE AND MAGNET

- Mark out door frame for strike.
- Mortice door frame for strike box and strike.
- Bolt recess to be 15mm deep in door frame.
- Screw strike and strike box to door frame with 2 screws supplied.
- Drill 19mm DIA hole x 40 Deep, 62mm above strike centreline.
- Insert magnet in hole.



ELECTRICAL SPECIFICATIONS

Note : Diagram depicts RH opened door, with handle & key in rest state.



• Solenoid Activation

Operating Voltage:
12~30Vdc

Operating Current:
500mA Max, 80mA holding @ 12Vdc
275mA Max, 50mA holding @ 24Vdc

• Led Current

Add 20mA to Total Operating Current if
Led's are fitted.

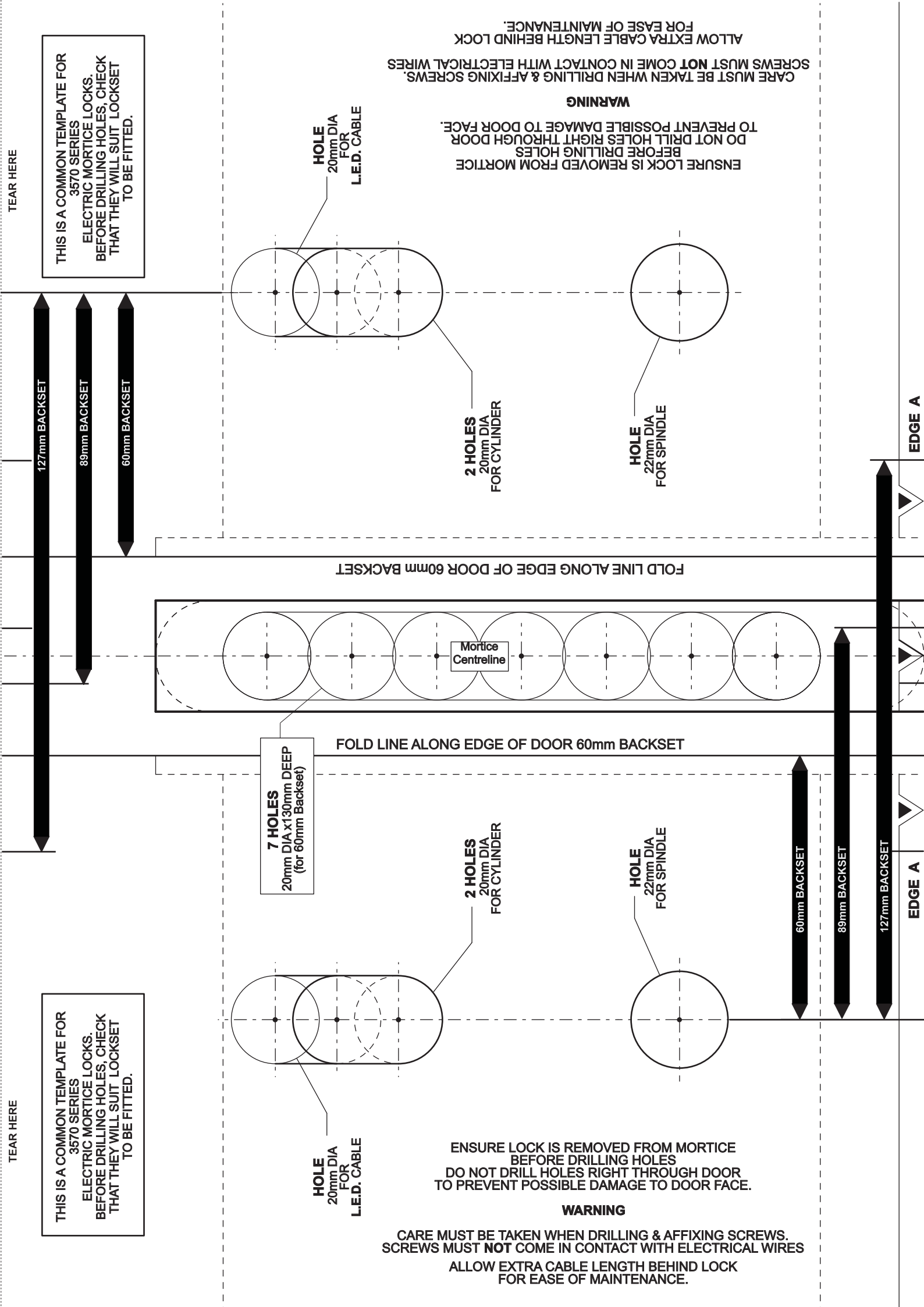
• Monitoring Circuits

Microswitches: 500mA Max @ 30Vdc each circuit
Reedswitch: 100mA Max @ 30Vdc

COLOUR

FUNCTION

Black	Solenoid 0Vdc
Red	Solenoid Positive (12~30Vdc)
Yellow	Door closed Reed Switch (NC)
Pink	Reed Switch Common
Light Blue	Deadlatched and Locked (NC)
Grey	Deadlatched and Locked Common
Brown	Hub monitor (NO or NC)
Blue	Hub monitor Common
Orange	Key override monitor (NO or NC)
Violet	Key override monitor Common
Green	LED (12~30Vdc)
White	Not connected



TEAR HERE

THIS IS A COMMON TEMPLATE FOR 3570 SERIES ELECTRIC MORTICE LOCKS. BEFORE DRILLING HOLES, CHECK THAT THEY WILL SUIT LOCKSET TO BE FITTED.



HOLE 20mm DIA FOR L.E.D. CABLE

2 HOLES 20mm DIA FOR CYLINDER

HOLE 22mm DIA FOR SPINDLE

CARE MUST BE TAKEN WHEN DRILLING & AFFIXING SCREWS. SCREWS MUST NOT COME IN CONTACT WITH ELECTRICAL WIRES. ALLOW EXTRA CABLE LENGTH BEHIND LOCK FOR EASE OF MAINTENANCE.

WARNING

ENSURE LOCK IS REMOVED FROM MORTICE BEFORE DRILLING HOLES. DO NOT DRILL HOLES RIGHT THROUGH DOOR TO PREVENT POSSIBLE DAMAGE TO DOOR FACE.

FOLD LINE ALONG EDGE OF DOOR 60mm BACKSET

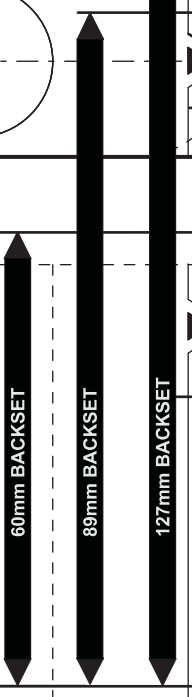
Mortice Centreline

FOLD LINE ALONG EDGE OF DOOR 60mm BACKSET

7 HOLES 20mm DIA x 130mm DEEP (for 60mm Backset)

2 HOLES 20mm DIA FOR CYLINDER

HOLE 22mm DIA FOR SPINDLE



EDGE A

EDGE A

TEAR HERE

THIS IS A COMMON TEMPLATE FOR 3570 SERIES ELECTRIC MORTICE LOCKS. BEFORE DRILLING HOLES, CHECK THAT THEY WILL SUIT LOCKSET TO BE FITTED.

HOLE 20mm DIA FOR L.E.D. CABLE

ENSURE LOCK IS REMOVED FROM MORTICE BEFORE DRILLING HOLES. DO NOT DRILL HOLES RIGHT THROUGH DOOR TO PREVENT POSSIBLE DAMAGE TO DOOR FACE.

WARNING

CARE MUST BE TAKEN WHEN DRILLING & AFFIXING SCREWS. SCREWS MUST NOT COME IN CONTACT WITH ELECTRICAL WIRES. ALLOW EXTRA CABLE LENGTH BEHIND LOCK FOR EASE OF MAINTENANCE.