

Application

Used in conjunction with the Single Run system. It is suitable for light commercial and residential applications.

To accommodate different building designs, panels can slide to one or both sides.

Telescopic opens passing panels concurrently. Operating one panel will drive the other panels to traverse across the opening.

Panel Specification

As per the Single Run systems.

Note: Different panel dimensions per system using soft close.

Track System:				
Single Run		120	180	350
Quick Run				
Max Panel Weight				
Per Individual Panel:				
2 Panels System	120kg	120kg	120kg	
3 Panels System Max	100kg	100kg	100kg	
Panel Height	3000mm	3000mm	3000mm	
Panel Thickness	28mm	35mm	35mm	

For ease of operation it is recommended that the panel width should not exceed 75% of panel height.

Timber panels for interior use can be of flush construction or glazed. Timber panels for industrial applications should be framed, ledged and braced. Metal panels should be constructed of box section, channel or angle framing, well braced and clad with flat or corrugated sheets.

Standard Sets and Packs

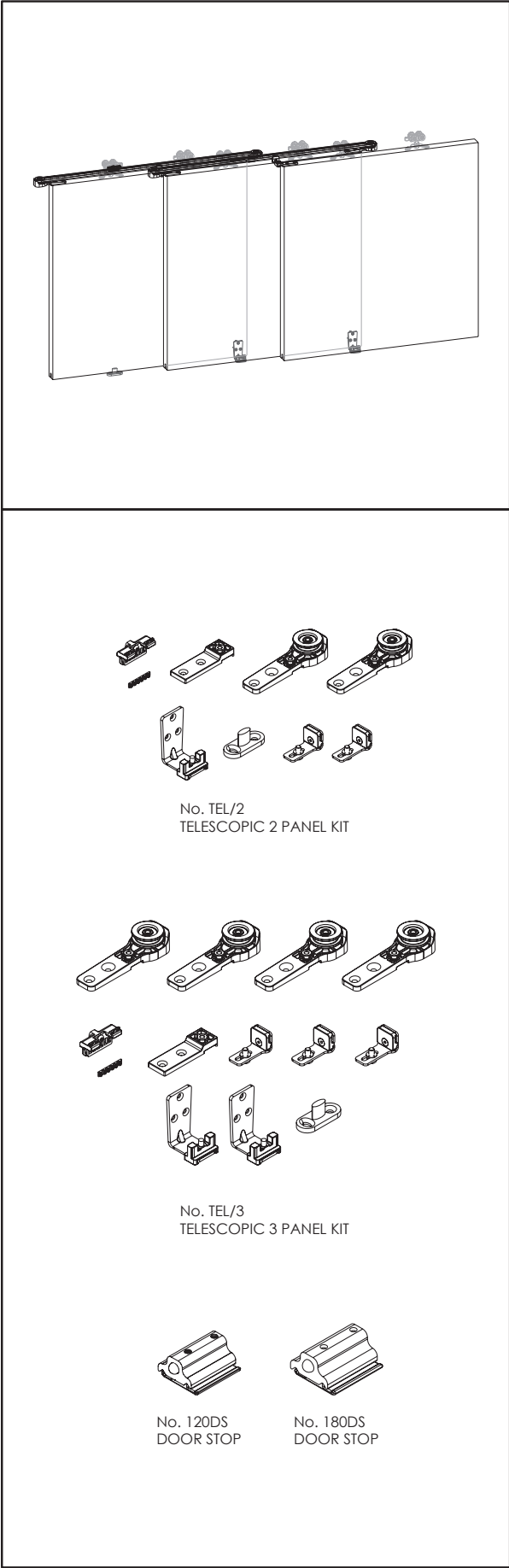
Sets comprise of clamped toothed belt, floor guide, pulley, datum block, clamp retainer, belt clamp and door guide.

Set No:	Max panel width
TEL/2	1450mm
TEL/3	1450mm

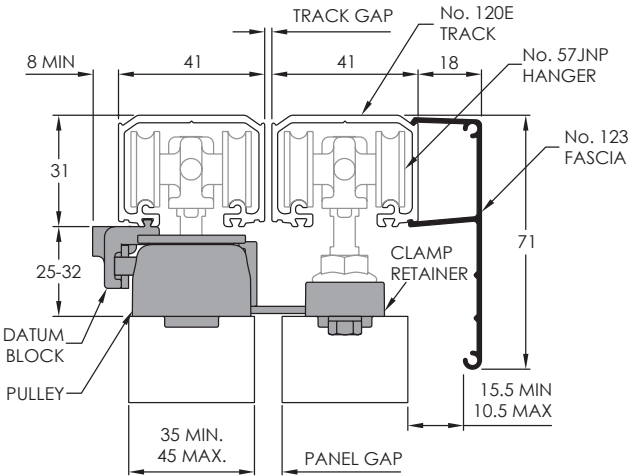
Hardware Specification

Track:	120E, 180A, & 350
Material	Aluminium
Finish	Anodised
Standard Lengths	2000mm, 3000mm, 4000mm & 6000mm

Accessories:	
Door Stop	120DS or 180DS
Fascia	123, 183, 353

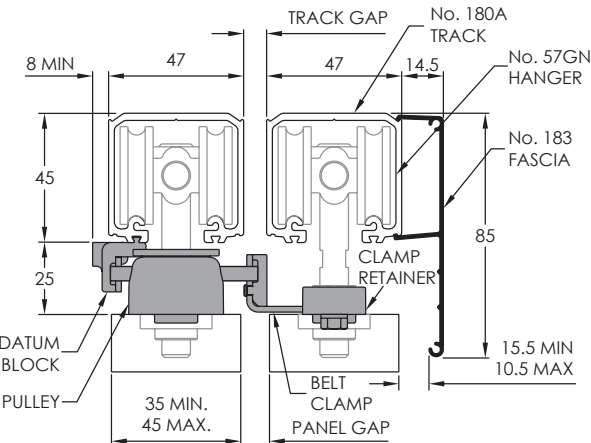


2 PANEL TELESCOPIC KIT
QUICK RUN 120



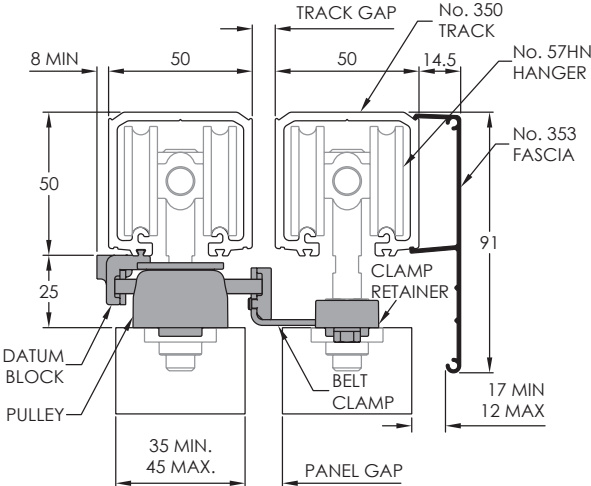
PANEL THICKNESS	28	35	38	40	45
TRACK GAP	0	2	5	8	12
PANEL GAP	12.7	7.7	7.7	8.7	7.7

2 PANEL TELESCOPIC KIT
SINGLE RUN 180



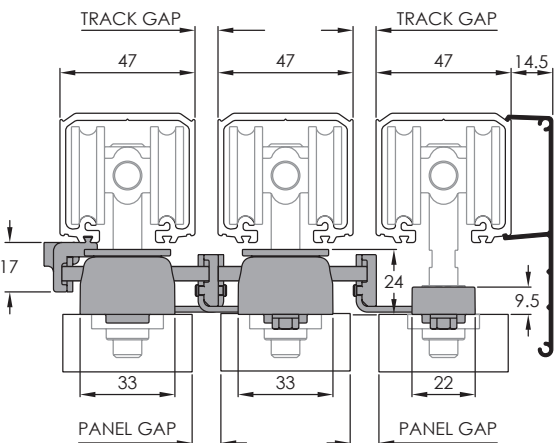
PANEL THICKNESS	35	38	40	45
TRACK GAP	0	0	1	7
PANEL GAP	12	9	8	8

2 PANEL TELESCOPIC KIT
SINGLE RUN 350

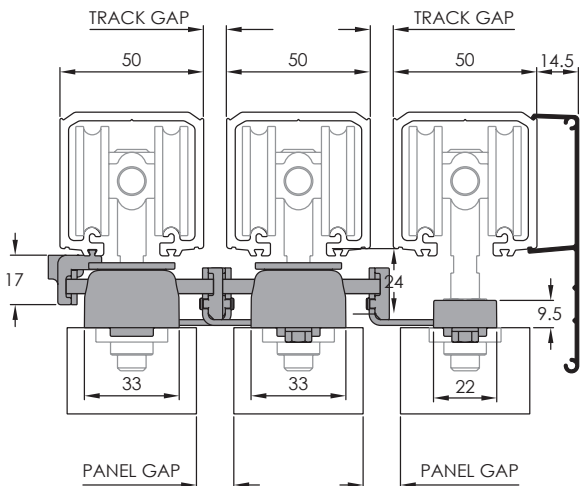


PANEL THICKNESS	35	38	40	45
TRACK GAP	0	0	0	3
PANEL GAP	15	12	10	8

3 PANEL TELESCOPIC KIT
SINGLE RUN 180



3 PANEL TELESCOPIC KIT
SINGLE RUN 350



TELESCOPIC KIT SPECIFICATIONS

SINGLE RUN SYSTEM	180	350
2 PANEL TELESCOPIC MAX PANEL WEIGHT	120KG	120KG
3 PANEL TELESCOPIC MAX PANEL WEIGHT	100KG	100KG

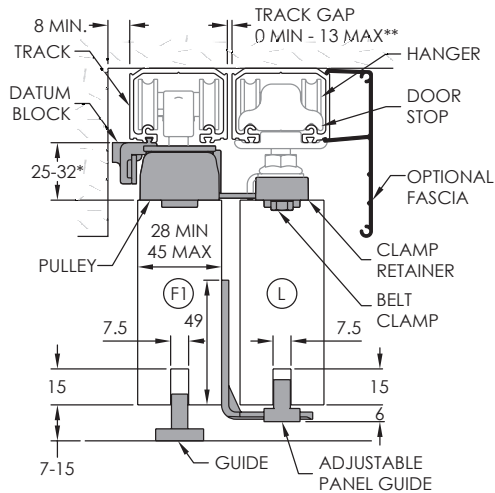
KEY

- (L) LEAD PANEL
- (F1) FOLLOWER PANEL 1
- (F2) FOLLOWER PANEL 2

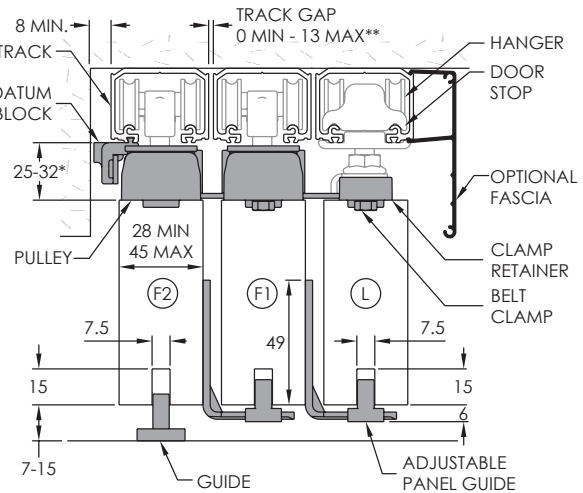
* MAX CLEARANCE
DEPENDENT ON
SINGLE RUN
SYSTEM USED
** TRACK GAP
DEPENDENT ON
SINGLE RUN
SYSTEM USED

FASCIA OPTION

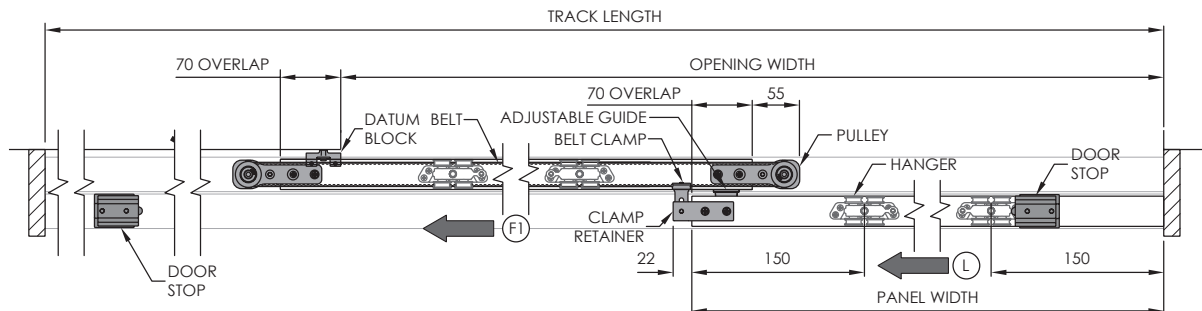
2 PANEL TELESCOPIC SINGLE RUN 120 HANGERS SHOWN



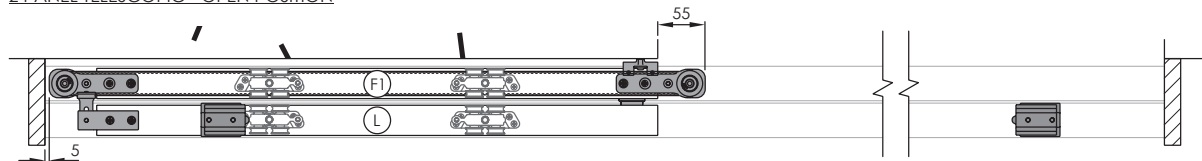
3 PANEL TELESCOPIC SINGLE RUN 120 HANGERS SHOWN



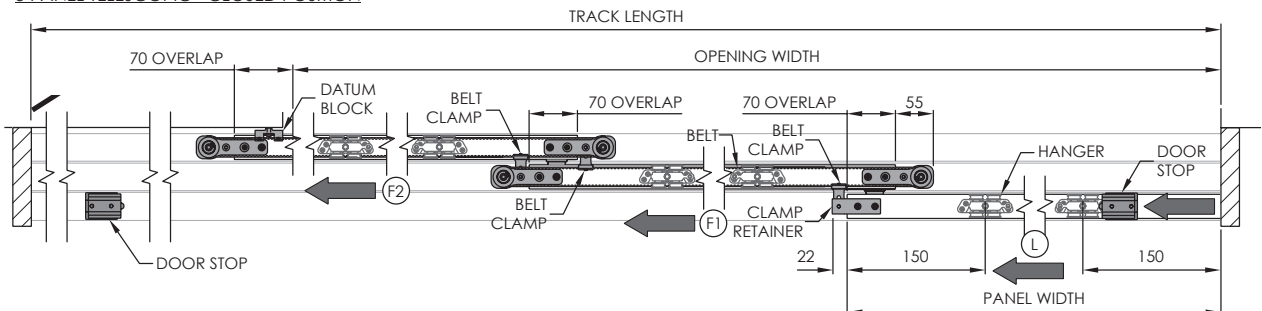
2 PANEL TELESCOPIC - CLOSED POSITION



2 PANEL TELESCOPIC - OPEN POSITION



3 PANEL TELESCOPIC - CLOSED POSITION



3 PANEL TELESCOPIC - OPEN POSITION

