



Your business can earn
Qantas Points with us.*

*Find out more by calling Access Hardware customer service on 1800 555 600 or visit accesshardware.com.au. T&Cs apply.
qantasbusinessrewards.com/terms and accesshardware.com.au/qbr

SEQUENCE SELECTORS

CONTROLS THE CLOSING
SEQUENCE OF DOUBLE DOORS

- Non handed
- Surface mounted installation
- Used on pairs of doors from 1800mm to 2400mm in width
- SS305 model used on pairs of doors greater than 2400mm and where exit devices are used
- Silicon roller for silent operation
- Bearing pivot arm to reduce arm failure



Fire Rated



SEQUENCE SELECTORS

FUNCTIONS

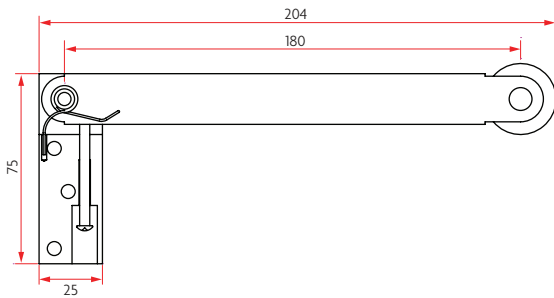
Sabre Sequence Selectors are used when the closing sequence of a pair of double doors is required. Pairs of doors that are rebated or when a sealing system has been specified will need a sequencing device to close the doors in the correct order. The Sabre Sequence Selector range has been developed to outperform any other selector of its

type. Engineered with quality bearings for both the arm and roller. The silicone roller travels silently along the roller plate when the door closes. For most other brands these extras are not included and all major parts are made from quality Stainless Steel.

180 SEQUENCE SELECTOR

SAB-SS180-SSS

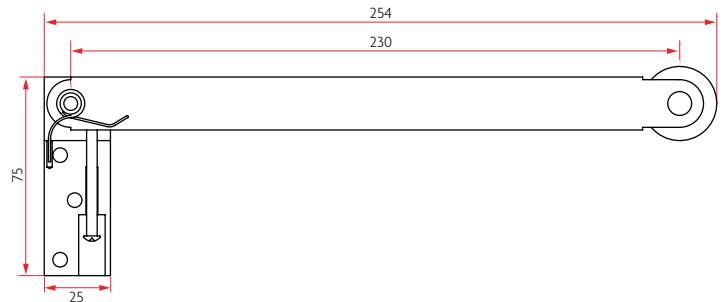
Suitable for pairs of doors up to 1800mm



230 SEQUENCE SELECTOR

SAB-SS230-SSS

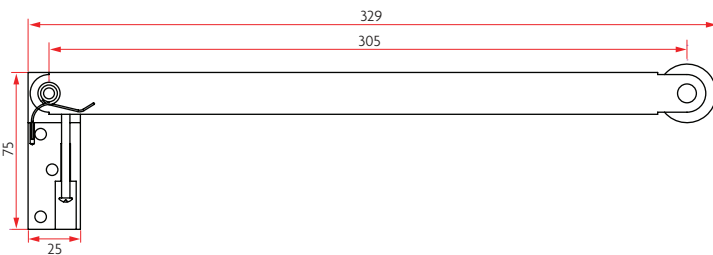
Suitable for pairs of doors up to 2400mm



305 SEQUENCE SELECTOR

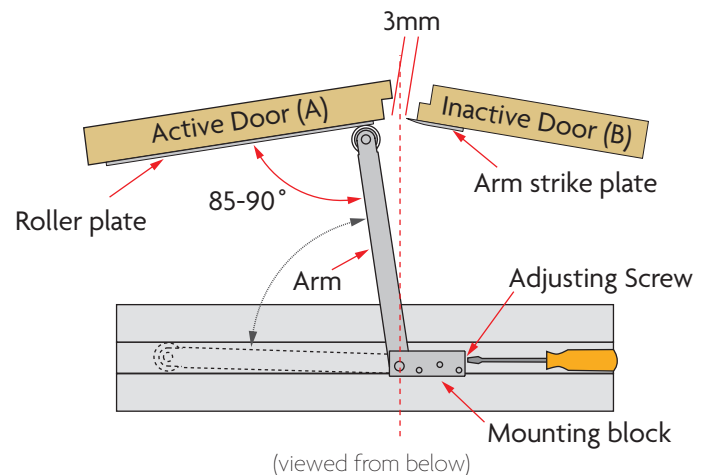
SAB-SS305-SSS

Suitable for pairs of doors greater than 2400mm, and where exit devices are used.

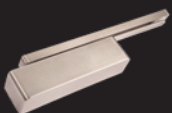


HOW A SEQUENCE SELECTOR WORKS

The selector arm holds the active leaf open until the inactive leaf pushes the selector arm out of the way allowing the doors to close in the correct sequence.



RELATED PRODUCTS



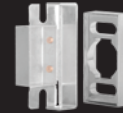
SAB-DCCA515-SSS
515 Cam Action Door Closer



SAB-DC836-SIL
836 Door Closer



SAB-RBK02-SSS
Commercial Latching Rebate Kit



SAB-TRK-SC
Tubular Rebate Kit

SABRE
ARCHITECTURAL

www.sabre.com.au