

RP4b



A medium duty threshold plate with integral sill gasket for use in conjunction with Raven door bottom seals.

Location: Door sill.

Finish: Satin clear (silver) or bronze anodised aluminium (25µm).

Fixing: Screw fix. Zinc plated, cross recess head CSK S.T. screws supplied. Fixing holes are pre-punched and countersunk.

Seal: RP404a. Grey flexible PVC.

Sizes: Available in stock lengths.

Approvals

ANSI/BHMA A156.21

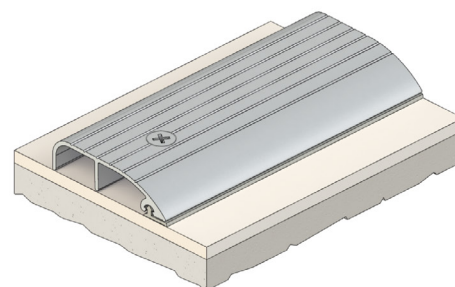
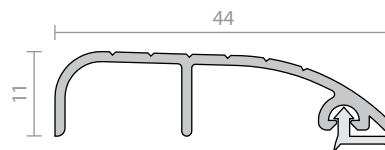
Access & Mobility NZ: NZ BC Compliance Doc. D1/AS1 1.3.2. **UK/EU:** Approved Document M.

Fire AUS/NZ: NCC Spec. C3.4. AS1530.4 & AS/NZS 1905.1. NZ BC Compliance Doc. C/AS1 6.19.2(a) & App. C6.1.1.

UK/EU: Approved Document B. BS 476 Pt. 20 & 22 (similar to BS EN 1634-1).

FRL & FRR-/240/30.

BAL **≤FZ** when used with a BAL rated door bottom seal in accordance with AS 3959.



RP13



A low profile threshold plate that is ideal for use in conjunction with Raven door bottom seals to prevent rain, draughts, noise and smoke infiltration.

Location: Door sill.

Finish: Satin clear (silver) or bronze anodised aluminium (25µm).

Fixing: Screw fix or builders adhesive for concealed fixing (user determined). Colour matched zinc plated, cross recess head CSK S.T. screws supplied.

Sizes: Available in stock lengths.

Approvals

R37913

ANSI/BHMA A156.21

Access & Mobility AUS/NZ: NCC D2.15 & D3.3. AS1428.1. NZ BC Compliance Doc. D1/AS1 1.3.2. **UK/EU:** Approved Document M.

Fire AUS/NZ: NCC Spec. C3.4. AS1530.4 & AS/NZS 1905.1. NZ BC Compliance Doc. C/AS1 6.19.2(a) & App. C6.1.1.

UK/EU: Approved Document B. BS 476 Pt. 20 & 22 (similar to BS EN 1634-1).

FRL & FRR-/240/30.

BAL **≤FZ** when used with a BAL rated door bottom seal in accordance with AS 3959.

