

## Daniela on Round Rose



**Product Code:** DA-R10-SC

**Description:**

D-shaped style and highly functional, the Daniela lever door handle, mounted on a round backplate is perfectly suited to work place environments and designed for maximum comfort, efficiency, safety and ease of use.

**Compliance:**       

**Rose/Plate Option Selected:**

Full set

**Size Selected:**

Full set

**Material:**

Brass

**Finish:**

Satin Chrome

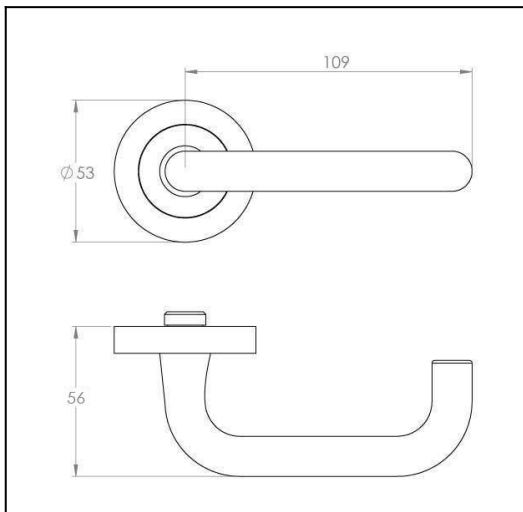


**Door thickness:**

Suits from 32mm to 52mm door as standard. For thicker doors longer screws and spindles are available.

**Fixing:**

Through bolt fixing, fully concealed. Self adjusting spindle 7.6mm to 8mm. Fits any lock or latch.



### Line Drawings

As a generic representation of the product, Line Drawings are designed for general use only and may not reflect specifics for all product options such as individual functions or sizes etc.

### Contact Us

For any further clarification of this product information or for help and advice, please call us on +613 9300 8888.

Designer Doorware reserves the right to make changes in design, specification, or additions and improvements to our products without notice. Under no circumstances is Designer Doorware obliged to manufacture current products as previously supplied. Designer Doorware is not responsible for additions, alterations or assembly made to our products by others. By downloading this information, you accept and are bound by the Terms & Conditions of this website.

For full Terms & Conditions and Product Warranty information refer to [www.designerdoorware.com.au](http://www.designerdoorware.com.au).

© Designer Doorware - 7 Kimpton Way, Altona VIC 3018 Australia.

<http://www.designerdoorware.com.au/catalogue/17009>