

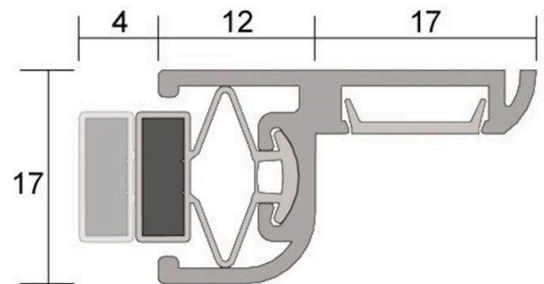


Kilargo IS6015 Magnetic Seal - Clear Anodised Aluminium

LO-IS6015

PRODUCT OPTIONS

Door Seal Length: 1000mm
2250mm
2500mm



DESCRIPTION

The IS6015 magnetic seal is designed to be fitted to the head and jambs of metal clad door perimeters. Can be used in lieu of door stops. This seal has sufficient magnetic strength so that latches may not be required.

Note: When ordering this seal for meeting stile applications, please specify the seals as PAIRS. This will ensure the correct orientation of the magnets, as correct polarity alignment is critical to this function.

Standard Lengths

1000mm
2250mm
2500mm
Also available in: 250mm increments from 1000mm to 3000mm (Special Order Only)

Standard Colours

Silver anodised aluminium with grey gasket and cover strip

Approvals

Acoustic ratings to AS1191 and ISO140.3

SPECIFICATION

MPN	IS6015
Brand	Kilargo
Product Width	17mm
Product Height	33mm
Product Finish or Colour	Clear Anodised (CA)
Product Material	Aluminium
Includes Fixing Screws	Yes
Fire Tested	No
Acoustic Rated to AS1191 and ISO140.3	Yes
Suitable for Smoke Doors	Yes
Suitable for Door Type	Timber Doors, Aluminium Doors
Contains Intumescent Material	No
Seal Can Be Installed	Surface Fix



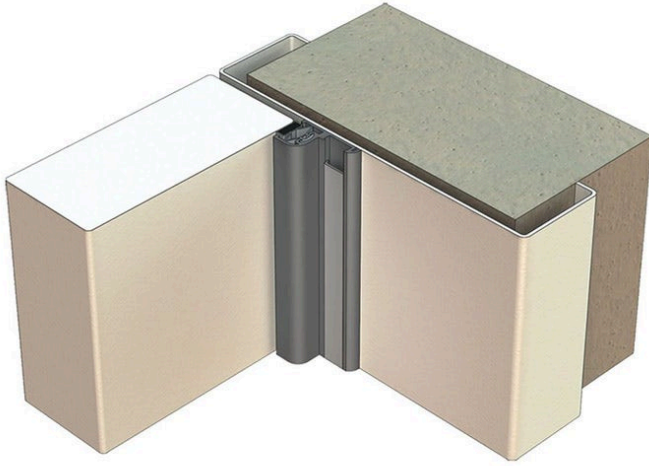
Kilargo IS6015 Magnetic Seal - Clear Anodised Aluminium

Scan to view online and for additional product information, or call us on **1800 555 600**.

Print Date: 28/4/24

Gasket / Seal Colour	Grey
Gasket Material	Magnetic
Self Adhesive	No
Product Warranty	2 Years

ADDITIONAL IMAGES



Kilargo IS6015 Magnetic Seal - Clear Anodised Aluminium

Scan to view online and for additional product information , or call us on **1800 555 600**.

Print Date: 28/4/24