

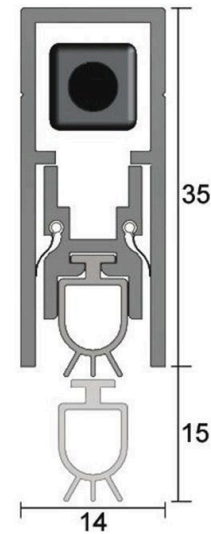


Kilargo IS8010si Automatic Door Bottom Seal - Clear Anodised Aluminium

LO-IS8010SI

PRODUCT OPTIONS

Door Seal Length: 380mm
600mm
820mm
920mm
1070mm
1220mm



DESCRIPTION

A medium duty, concealed automatic door bottom seal which is mortised into the bottom edge of single action doors. It operates automatically by a spring loaded mechanism which lifts the seal clear of the floor as soon as the door is opened. Mounted into a 35mm deep x 15mm wide machined groove, the seal is screwfixed back into the door stiles via stainless steel end plates, holding the seal in place. The seal operates automatically by pressure against the door jamb on its adjustable strike button. The seal contains a high efficiency mechanism to assist with the closing force requirements detailed in AS1428/1 (Design for Access and Mobility).

Gap Size

Min. 3mm / Max. 15mm

Standard Lengths with Maximum Cut-back sizes

380mm seal cuts to 275mm
600mm seal cuts to 380mm
820mm seal cuts to 600mm
920mm seal cuts to 820mm
1070mm seal cuts to 920mm
1220mm seal cuts to 1070mm

(*Seals can be cut on site for exact dimension).

Standard Colours

Silver anodised aluminium with stainless steel end plates, grey silicone gasket.
(Black silicone gasket also available upon request.)

Approvals

Fire tested to AS1530 Part 4
Medium temperature smoke leakage tests to AS1530 Part 7 available on proprietary door assemblies
Conforms to BCA Specification C3.4 for smoke doors
Acoustic ratings to AS1191 and ISO140.3
Durability tests demonstrating over 1,000,000 open and close cycles

SPECIFICATION

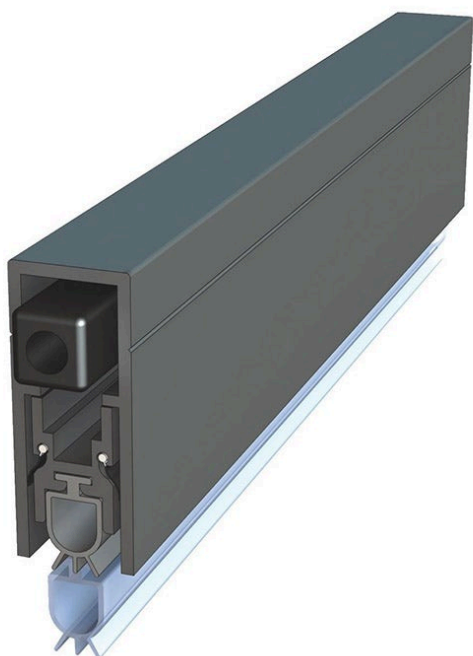


Kilargo IS8010si Automatic Door Bottom Seal - Clear Anodised Aluminium
Scan to view online and for additional product information , or call us on **1800 555 600**.

Print Date: 28/4/24

MPN	IS8010SI
Brand	Kilargo
Product Height	35mm
Product Thickness	14mm
Product Finish or Colour	Clear Anodised (CA)
Product Material	Aluminium
Includes Fixing Screws	Yes
Fire Tested	Yes
Suitable for Smoke Doors	Yes
Acoustic Rated to AS1191 and ISO140.3	Yes
Suitable for Door Type	Timber Doors
Contains Intumescent Material	No
Seal Can Be Installed	Concealed
Gasket / Seal Colour	Grey
Gasket Material	Silicon Impregnated
Min Door Thickness	30mm
Min Door Gap	3mm
Max Door Gap	15mm
Product Warranty	2 Years

ADDITIONAL IMAGES



Kilargo IS8010si Automatic Door Bottom Seal - Clear Anodised Aluminium
 Scan to view online and for additional product information , or call us on **1800 555 600**.

Print Date: 28/4/24