

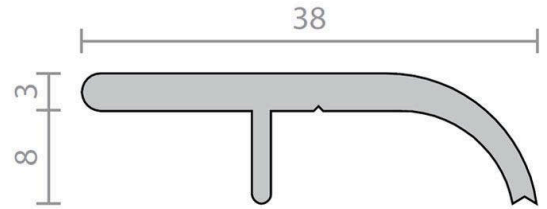


Raven RP27 Threshold Plate 8mm - Clear Anodised Aluminium

RP27

PRODUCT OPTIONS

Product Length: 1000mm
2000mm
3000mm



DESCRIPTION

A heavy duty threshold plate designed for sill and carpet edge protection.
Can be used in conjunction with Raven door bottom seals to prevent rain, draughts, noise and smoke infiltration.

Location: Door sill.

Finish: Satin clear (silver) or bronze anodised aluminium (25micron).

Fixing: Screw fix. Colour matched zinc plated, cross recess head CSK S.T. screws supplied.

Sizes: Available in stock lengths.

Approvals

Access & Mobility NZ: NZ BC Compliance Doc. D1/AS1 1.3.2.

UK/EU: Approved Document M.

Fire AUS/NZ: NCC Spec. C3.4. AS1530.4 & AS/NZS 1905.1. NZ BC Compliance Doc. C/AS1 6.19.2(a) & App. C6.1.1.

UK/EU: Approved Document B. BS 476 Pt. 20 & 22 (similar to BS EN 1634-1).

FRL & FRR-/240/30. Fire Approved

Fire Approved when used with a BAL rated door bottom seal in accordance with AS 3959.

SPECIFICATION

MPN	A27C
Brand	Raven
Product Width	38mm
Product Height	11mm
Product Finish or Colour	Clear Anodised (CA)
Product Material	Aluminium
Includes Fixing Screws	Yes
AS1428.1 Compliant	No
Fire Tested	Yes
Acoustic Rated to AS1191 and ISO140.3	No
Product Warranty	2 Years

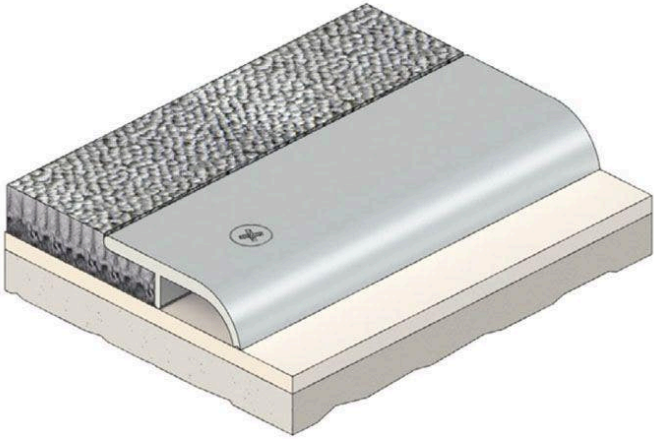
ADDITIONAL IMAGES



Raven RP27 Threshold Plate 8mm - Clear Anodised Aluminium

Scan to view online and for additional product information , or call us on **1800 555 600**.

Print Date: 20/4/24



Raven RP27 Threshold Plate 8mm - Clear Anodised Aluminium

Scan to view online and for additional product information , or call us on **1800 555 600**.

Print Date: 20/4/24