

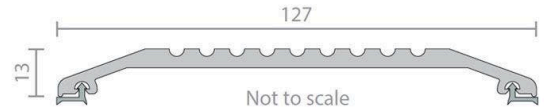


# Raven RP28 Threshold Plate 13mm - Clear Anodised Aluminium

RP28

## PRODUCT OPTIONS

Product Length: 1000mm  
2000mm  
3000mm



## DESCRIPTION

RP28 is a wide, heavy duty threshold plate with a ribbed profile and integral sill gaskets. They are ideal for use with pivot hinge doors. Can be used in conjunction with Raven door bottom seals to prevent rain, draughts, noise and smoke infiltration.

Location: Door sill.

Finish: Satin clear (silver) or bronze anodised aluminium (25micron).

Fixing: Screw fix. Colour matched zinc plated, cross recess head CSK S.T. screws supplied.

Seal: RP404a. Grey flexible PVC.

Sizes: Available in stock lengths.

### Approvals

Access & Mobility NZ: NZ BC Compliance Doc. D1/AS1 1.3.2.

UK/EU: Approved Document M.

Fire AUS/NZ: NCC Spec. C3.4. AS1530.4 & AS/NZS 1905.1. NZ BC Compliance Doc. C/AS1 6.19.2(a) & App. C6.1.1.

UK/EU: Approved Document B. BS 476 Pt. 20 & 22 (similar to BS EN 1634-1).

FRL & FRR-/240/30 and FD120. Fire Approved

Fire Approved when used with a BAL rated door bottom seal in accordance with AS 3959.

## SPECIFICATION

<b>MPN</b>	A28C
<b>Brand</b>	Raven
<b>Product Width</b>	127mm
<b>Product Height</b>	13mm
<b>Product Finish or Colour</b>	Clear Anodised (CA)
<b>Product Material</b>	Aluminium
<b>Includes Fixing Screws</b>	Yes
<b>AS1428.1 Compliant</b>	No
<b>Fire Tested</b>	Yes
<b>Acoustic Rated to AS1191 and ISO140.3</b>	No
<b>Product Warranty</b>	2 Years

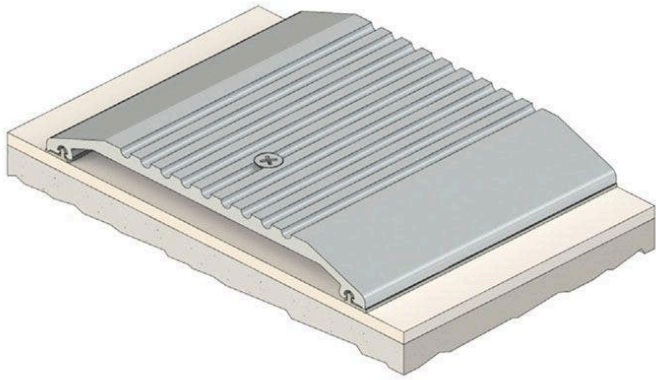
## ADDITIONAL IMAGES



### Raven RP28 Threshold Plate 13mm - Clear Anodised Aluminium

Scan to view online and for additional product information, or call us on **1800 555 600**.

Print Date: 20/4/24



**Raven RP28 Threshold Plate 13mm - Clear Anodised Aluminium**

Scan to view online and for additional product information , or call us on **1800 555 600**.

Print Date: 20/4/24