

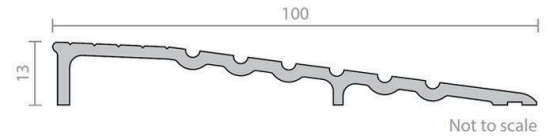


Raven RP77 Threshold Plate 13mm - Clear Anodised Aluminium

RP77

PRODUCT OPTIONS

Product Length: 1000mm
1250mm
1500mm
1750mm
2000mm
2250mm
2500mm
3000mm



DESCRIPTION

A heavy duty threshold ramp with a ribbed design which can be positioned back to back to form a two way threshold ramp conforming to NCC Pt. D2.15 Thresholds (b).

Can be used in conjunction with Raven door bottom seals to prevent rain, draughts, noise and smoke infiltration. Suitable for use with most floor pivots.

Ideal for commercial shop fronts providing a neat ramp detail between carpets or tiles at door ways.

Can also be used to provide a ramped frame for internal door mats.

Location: Door sill.

Finish: Satin clear (silver) or bronze anodised aluminium (25micron).

Fixing: Screw fix. Zinc plated, cross recess head CSK S.T. screws supplied.

Sizes: Available in stock lengths.

Specify longer length than doorway to allow for neat installation around door frame.

Approvals

UL Cert. GVV1.R37913

Access & Mobility AUS/NZ: NCC D2.15 & D3.3. AS1428.1. NZ BC Compliance Doc. D1/AS1 1.3.2.

UK/EU: Approved Document M.

Fire AUS/NZ: NCC Spec. C3.4. AS1530.4 & AS/NZS 1905.1. NZ BC Compliance Doc. C/AS1 6.19.2(a) & App. C6.1.1.

UK/EU: Approved Document B. BS 476 Pt. 20 & 22 (similar to BS EN 1634-1).

FRL & FRR-/240/30. Fire Approved

Fire Approved when used with a BAL rated door bottom seal in accordance with AS 3959.

SPECIFICATION

MPN	A77C
Brand	Raven
Product Width	100mm
Product Height	13mm
Product Warranty	2 Years
Product Finish or Colour	Clear Anodised (CA)



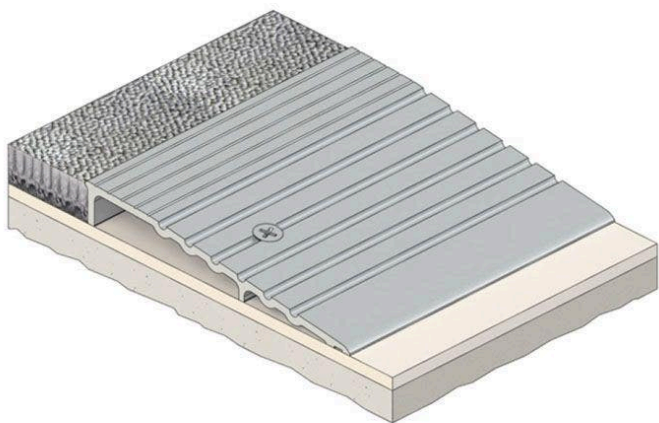
Raven RP77 Threshold Plate 13mm - Clear Anodised Aluminium

Scan to view online and for additional product information , or call us on **1800 555 600**.

Print Date: 29/4/24

Product Material	Aluminium
Includes Fixing Screws	Yes
AS1428.1 Compliant	Yes
Fire Tested	Yes
Acoustic Rated to AS1191 and ISO140.3	No

ADDITIONAL IMAGES



Raven RP77 Threshold Plate 13mm - Clear Anodised Aluminium

Scan to view online and for additional product information , or call us on **1800 555 600**.

Print Date: 29/4/24