

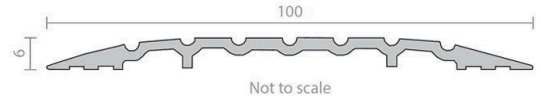


Raven RP116 Threshold Plate 6mm - Clear Anodised Aluminium

RP116

PRODUCT OPTIONS

Product Length: 1000mm
1750mm
2000mm
3000mm



DESCRIPTION

A low profile threshold plate that can be used in conjunction with Raven door bottom seals to prevent rain, draughts, noise and smoke infiltration. Suitable for use with most floor pivots.

Location: Door sill.

Finish: Satin clear (silver) or bronze anodised aluminium (25micron).

Fixing: Screw fix or builders adhesive for concealed fixing (user determined). Colour matched zinc plated, cross recess head CSK S.T. screws supplied.

Sizes: Available in stock lengths.

Approvals

Access & Mobility AUS/NZ: NCC D2.15 & D3.3. AS1428.1. NZ BC Compliance Doc. D1/AS1 1.3.2.

UK/EU: Approved Document M.

Fire AUS/NZ: NCC Spec. C3.4. AS1530.4 & AS/NZS 1905.1. NZ BC Compliance Doc. C/AS1 6.19.2(a) & App. C6.1.1.

UK/EU: Approved Document B. BS 476 Pt. 20 & 22 (similar to BS EN 1634-1).

FRL & FRR-/240/30 and FD180. Fire Approved

Fire Approved when used with a BAL rated door bottom seal in accordance with AS 3959.

SPECIFICATION

MPN	A116C
Brand	Raven
Product Width	100mm
Product Height	6mm
Product Finish or Colour	Clear Anodised (CA)
Product Material	Aluminium
Includes Fixing Screws	Yes
AS1428.1 Compliant	Yes
Fire Tested	Yes
Acoustic Rated to AS1191 and ISO140.3	No
Product Warranty	2 Years

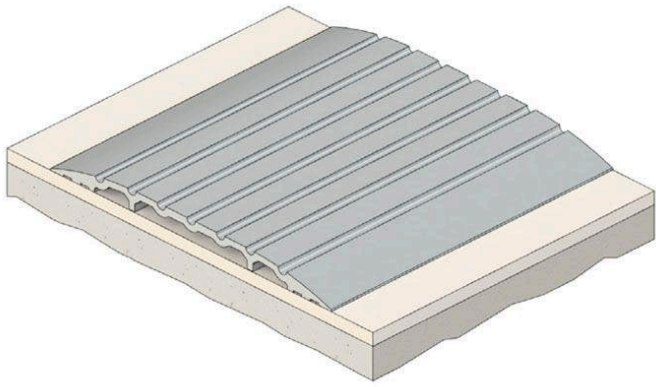
ADDITIONAL IMAGES



Raven RP116 Threshold Plate 6mm - Clear Anodised Aluminium

Scan to view online and for additional product information, or call us on **1800 555 600**.

Print Date: 27/4/24



Raven RP116 Threshold Plate 6mm - Clear Anodised Aluminium

*Scan to view online and for additional product information , or call us on **1800 555 600**.*

Print Date: 27/4/24