

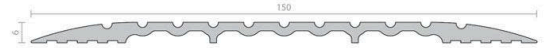


# Raven RP137 Threshold Plate 6mm - Clear Anodised Aluminium

RP137

## PRODUCT OPTIONS

Product Length: 1000mm  
1750mm  
2000mm  
3000mm



## DESCRIPTION

A low profile, extra wide heavy duty threshold plate that can be used in conjunction with Raven door bottom seals to prevent rain, draughts, noise and smoke infiltration. Ideal for larger style commercial door frames.

Location: Door sill.

Finish: Satin clear (silver) anodised aluminium (25micron).

Fixing: Screw fix or builders adhesive for concealed fixing (user determined). Colour matched zinc plated, cross recess head CSK S.T. screws supplied.

Sizes: 3000mm, 2000mm, 1750mm, 1000mm.

### Approvals

UL Cert. GVI.R37913

Access & Mobility AUS/NZ: NCC D2.15 & D3.3. AS1428.1. NZ BC Compliance Doc. D1/AS1 1.3.2.

UK/EU: Approved Document M.

Fire AUS/NZ: NCC Spec. C3.4. AS1530.4 & AS/NZS 1905.1. NZ BC Compliance Doc. C/AS1 6.19.2(a) & App. C6.1.1.

UK/EU: Approved Document B. BS 476 Pt. 20 & 22 (similar to BS EN 1634-1).

FRL & FRR-/240/30 and FD180. Fire Approved

Fire Approved when used with a BAL rated door bottom seal in accordance with AS 3959.

## SPECIFICATION

<b>MPN</b>	A137C
<b>Brand</b>	Raven
<b>Product Width</b>	150mm
<b>Product Height</b>	6mm
<b>Product Finish or Colour</b>	Clear Anodised (CA)
<b>Product Material</b>	Aluminium
<b>Includes Fixing Screws</b>	Yes
<b>AS1428.1 Compliant</b>	Yes
<b>Fire Tested</b>	Yes
<b>Acoustic Rated to AS1191 and ISO140.3</b>	No
<b>Product Warranty</b>	2 Years

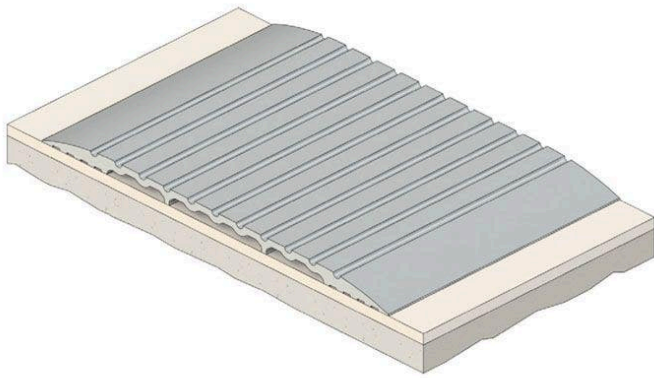
## ADDITIONAL IMAGES



### Raven RP137 Threshold Plate 6mm - Clear Anodised Aluminium

Scan to view online and for additional product information , or call us on **1800 555 600**.

Print Date: 28/4/24



**Raven RP137 Threshold Plate 6mm - Clear Anodised Aluminium**

*Scan to view online and for additional product information , or call us on **1800 555 600**.*

*Print Date: 28/4/24*