



FSH Compact Electric Strike - Door Latch Monitored

SKU FSH-FES10M

MPN FES10M



DESCRIPTION

The FES10 Series electric strikes are designed for light commercial and residential applications. With a small ANSI footprint, the strikes accept either 12 or 24VDC and have been tested to a 2-hour fire rated in accordance with AS 1530.4:2005 (contact Allegion for more details).

The strikes are easily Power To Lock (PTL) / Power To Open (PTO) field interchangeable by simply changing over the barbell mechanism. The device is pre-drilled to cater for extension lips, comes with a 5 year warranty and has a holding strength of up to 1200kg.

The FES10M version has Door Status Sensor monitoring.

Features:

- Stainless steel faceplate and keeper
- Barbell mechanism for simple change of locking function
- Low power consumption
- Compatible with door latch depth of up to 15mm
- Superior holding strength of up to 1200kg
- 5 year warranty
- 12 or 24VDC operation
- Pre-drilled for extension lips
- CE/C-Tick

Technical details

- Function: Mortise mount, Power To Lock (PTL) / Power To Open (PTO) field interchangeable
- Holding strength: Up to 1200kg
- Voltage/current: Dual Voltage 12VDC/24VDC. 200mA @ 12VDC. 100mA @ 24VDC
- Approvals: Up to 4-hour fire rated in accordance with AS 1905 (contact Allegion for more details)
- Monitoring: Door latch monitoring
- Dimensions: L 125mm x W 42mm x D 35mm

SPECIFICATION

MPN	FES10M
Brand	FSH
Product Width	42mm
Product Height	125mm



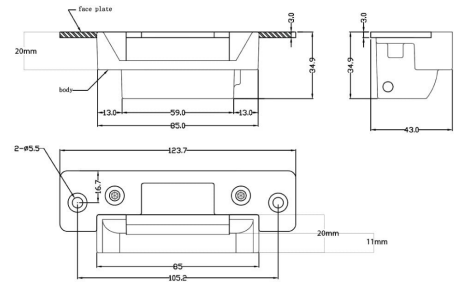
FSH Compact Electric Strike - Door Latch Monitored

Scan to view online and for additional product information , or call us on **1800 555 600**.

Print Date: 28/4/24

Product Thickness	35mm
Product Finish or Colour	Satin Stainless Steel (SSS)
Product Material	Stainless Steel
Fire Rating	2 Hour
Fire Tested	Yes
Fail Safe / Fail Secure	Fail Safe/Secure
Holding Force	1000kg
Voltage	12 - 24V DC
Monitored	Yes
Product Warranty	5 Years

ADDITIONAL IMAGES



FSH Compact Electric Strike - Door Latch Monitored
 Scan to view online and for additional product information , or call us on **1800 555 600**.

Print Date: 28/4/24