



# dormakaba MS2601 Deadbolt Primary Mortice Lock - Satin Stainless Steel

SKU DKMS2601-SSS

MPN9400000003335



## DESCRIPTION

### Construction

The mortice case, cover and faceplate are constructed of 304 grade stainless steel providing greater security than die cast mortice locks and better corrosion resistance. Moreover, the lock spindle hubs, latchbolt, deadbolt and dead latch are constructed of high grade sintered stainless steel. Springs are of high grade spring steel.

### SCEC Approved

The MS2602, MS2601 & MS2601B mortice locks and has been certified to comply with the SL3 rating from SCEC.

### Security

dormakaba MS2600 Series locks conform to level SL8 (Physical Security) in accordance with Australian lock standard AS4145.2:2008.

### Durability

dormakaba MS2600 Series mortice locks conform to level D8 (Durability) in accordance with Australian lock standard AS4145.2:2008.

### Strikes

Universal "T" shape strike plate as standard.

### Rebate Kits

Rebate kits are available as accessory to convert the MS2600 & MS2900 Series Mortice Locks into a rebated unit.

### Fabricator Kits

Fabricator kits are available as an accessory to accommodate installation on metal/aluminium doors and frames.

**Note:** Supplied less cylinder.

## SPECIFICATION

MPN	9400000003335
Brand	dormakaba
Product Width	25mm
Product Height	175mm
Product Depth	86mm
Projection or Length	20mm
Product Finish or Colour	Satin Stainless Steel (SSS)

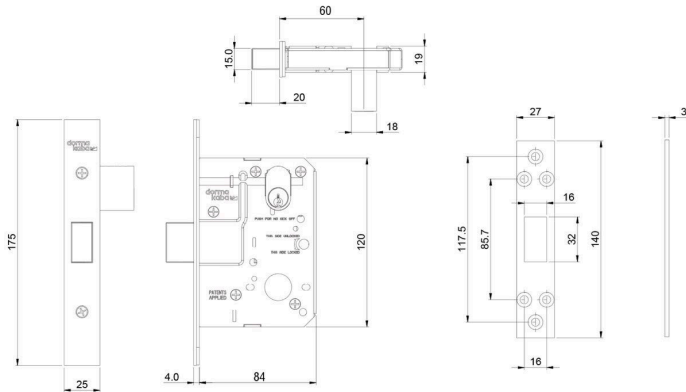


**dormakaba MS2601 Deadbolt Primary Mortice Lock - Satin Stainless Steel**  
Scan to view online and for additional product information , or call us on **1800 555 600**.

Print Date: 26/4/24

<b>Product Material</b>	Stainless Steel
<b>Lock Backset</b>	60mm
<b>Includes Fixing Screws</b>	Yes
<b>Bolt / Latch Material</b>	Stainless Steel
<b>Fire Tested</b>	Yes
<b>SCEC Rating</b>	Yes
<b>Includes Cylinder</b>	No
<b>Cylinder Cut Out Profile</b>	Oval
<b>Includes Strike Plate</b>	Yes
<b>Bolt Throw</b>	20mm
<b>Lockable</b>	Yes
<b>Min Door Thickness</b>	32mm
<b>Max Door Thickness</b>	50mm
<b>Product Warranty</b>	10 Years

## ADDITIONAL IMAGES



**dormakaba MS2601 Deadbolt Primary Mortice Lock - Satin Stainless Steel**  
 Scan to view online and for additional product information , or call us on **1800 555 600**.

Print Date: 26/4/24