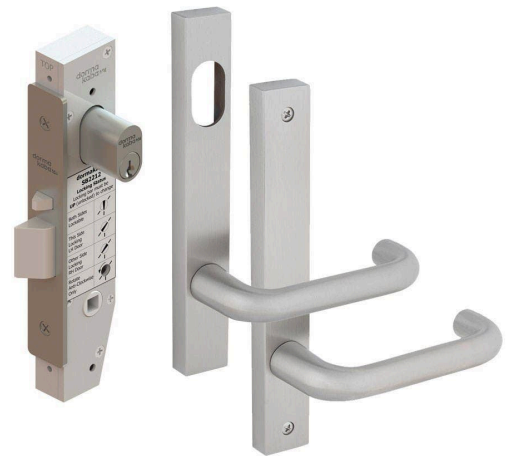


**dormakaba** 

# dormakaba SB2212 Classroom Lock Kit with 6400 Square End Plate Furniture and KD Cylinder - Satin Stainless Steel

**SKU** DKSB2212-KIT6A-KD

**MPN** 9400000013401



## DESCRIPTION

dormakaba SB2212 short backset mortice lock classroom kit with 316 grade satin stainless steel furniture.

Suitable for commercial shop front doors.

The mortice lock kit includes:

- 1 x SB2212SSS 23mm backset mortice lock.
- 1 x 6400/30SSS external lever on plate with cylinder hole.
- 1 x 6406/30SSS internal lever on plate.
- 1 x 570 cylinder with keys.

AS1428.1 compliant leversets.

### Mortice lock

- 23mm backset.
- Operated by key or handle outside or by turnsnib, key or handle inside.
- Cylinder or handle retracts the latch.
- Suits door thickness 32-50 mm.
- 15mm stainless steel reversible latchbolt.
- Stainless steel faceplate and strike.
- Easily adapted to most function.
- Supplied with turn snib adaptor.
- Supplied with cylinder.
- Compatible to most restricted keying systems.
- Electric strike compatibility.
- Finished in satin stainless steel.

### External furniture

- Narrow exterior square end plate.
- Cylinder hole with Noosa 30 series lever.
- Disabled access AS1428.1 compliant lever.
- Manufactured using 316 corrosion resistant solid stainless steel.
- Concealed fixing.
- Plate size 185 x 26 x 12.7mm.



**dormakaba SB2212 Classroom Lock Kit with 6400 Square End Plate Furniture and KD Cylinder - Satin Stainless Steel**

Scan to view online and for additional product information, or call us on **1800 555 600**.

Print Date: 28/4/24

Plates are designed to fit back to back.  
Suits door thickness from 32-50 mm.  
External plates supplied with fixing screws.  
Screw fixing centres 160 mm.  
Finished in satin stainless steel.

#### Internal furniture

Narrow interior square end plate.  
Plain plate with Noosa 30 series lever.  
Disabled access AS1428.1 compliant lever.  
Manufactured using 316 corrosion resistant solid stainless steel.  
Visible fixing.  
Plate size 185 x 26 x 12.7mm.  
Plates are designed to fit back to back.  
Suits door thickness from 32-50mm.  
Screw fixing centres 160mm.  
Finished in satin stainless steel.

## SPECIFICATION

<b>MPN</b>	9400000013401
<b>Brand</b>	dormakaba
<b>Product Thickness</b>	9mm
<b>Product Finish or Colour</b>	Satin Stainless Steel (SSS)
<b>Product Material</b>	Stainless Steel, Zinc Diecast
<b>Lock Backset</b>	23mm
<b>Bolt / Latch Material</b>	Stainless Steel
<b>AS1428.1 Compliant</b>	Yes
<b>Includes Strike Plate</b>	Yes
<b>Cylinder Cut Out Profile</b>	Oval
<b>Cylinder Keyway</b>	C4
<b>Handing</b>	Reversible
<b>Lockable</b>	Yes
<b>Suits Rebated Doors</b>	No
<b>Min Door Thickness</b>	32mm
<b>Max Door Thickness</b>	50mm
<b>Includes Cylinder</b>	Yes
<b>Number of Pins / Wafers</b>	6 Pin
<b>Number of Keys Included</b>	2
<b>Can be Master Keyed</b>	Yes
<b>Can Be Rekeyed</b>	Yes
<b>Plate Height</b>	185mm
<b>Plate Thickness</b>	12mm
<b>Plate Width</b>	26mm
<b>Product Warranty</b>	10 Years



**dormakaba SB2212 Classroom Lock Kit with 6400 Square End Plate Furniture and KD Cylinder - Satin Stainless Steel**

*Scan to view online and for additional product information , or call us on **1800 555 600**.*

Print Date: 28/4/24