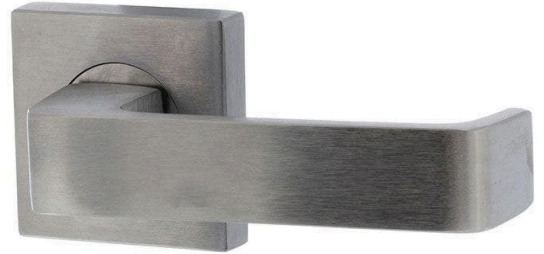




# Lockwood 1421-90 Internal Half Only Lever on Square Rose - Satin Chrome

SKU LW1421-90SC

MPN1421/90SC



## DESCRIPTION

### Lockwood 1421-90 Internal Half Set Satin Chrome

Dimensions - 58mm x 58mm x 11.6mm  
Suits 32mm - 50mm Timber Doors (LW3570 series lock)  
Suits 33mm - 50mm Timber Doors (LWA2560 latch)  
Satin Chrome finish  
25 year manufacturer's warranty  
Australian made  
Horizontal fixings  
S3 Security & D8 Durability Rating (AS4145.2-2008)  
Fire rated

## SPECIFICATION

<b>MPN</b>	1421/90SC
<b>Brand</b>	Lockwood
<b>Projection or Length</b>	51.6mm
<b>Rose Diameter</b>	58mm
<b>Product Finish or Colour</b>	Satin Chrome (SC)
<b>Product Material</b>	Brass
<b>Includes Fixing Screws</b>	Yes
<b>AS1428.1 Compliant</b>	Yes
<b>Fire Tested</b>	Yes
<b>Handing</b>	Non-Handed
<b>Fixing</b>	Visible Fixed
<b>Spindle Size</b>	7.6mm
<b>Finger Clearance</b>	44mm
<b>Max Door Thickness</b>	50mm
<b>Product Warranty</b>	25 Years



**Lockwood 1421-90 Internal Half Only Lever on Square Rose - Satin Chrome**  
Scan to view online and for additional product information , or call us on **1800 555 600**.

Print Date: 25/4/24