

dormakaba 

dormakaba ED22M Horizontal Mortice Panic Exit Device -No Lock - Satin Stainless Steel - 1060mm

SKU KBED22MSSS

MPN9400000002211



DESCRIPTION

dormakaba ED22M Mortice Exit Device No Lock Satin Stainless Steel

Suits 35 -50mm doors
Exit only function
Surface & through-bolt concealed fixing
Used dormakaba MS mortice lock
Length - 1060mm (Field sizable to 645mm)
Non-rated; includes hex-key dogging
All fixings supplied
Satin stainless steel finish

SPECIFICATION

MPN	9400000002211
Brand	dormakaba
Product Height	154mm
Product Length	1060mm
Product Depth	65.5mm
Product Finish or Colour	Satin Stainless Steel (SSS)
Product Material	Varied Metals
Number of Locking Points	1
Latching Type	Mortise Lock
Includes Fixing Screws	Yes
Suitable for Door Type	Timber Doors, Aluminium Doors
Can be Master Keyed	No
Min Door Thickness	35mm
Max Door Thickness	50mm
Product Warranty	10 Years

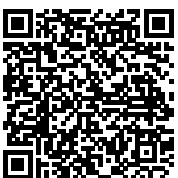
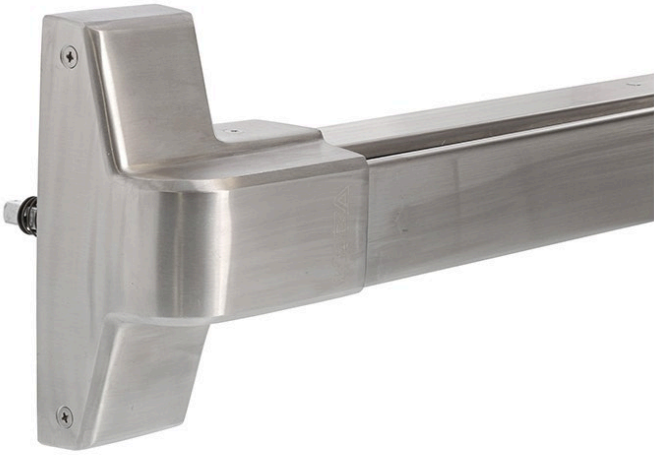
ADDITIONAL IMAGES



dormakaba ED22M Horizontal Mortice Panic Exit Device -No Lock - Satin Stainless Steel - 1060mm

Scan to view online and for additional product information , or call us on **1800 555 600**.

Print Date: 25/4/24



dormakaba ED22M Horizontal Mortise Panic Exit Device -No Lock - Satin Stainless Steel - 1060mm
*Scan to view online and for additional product information , or call us on **1800 555 600**.*

Print Date: 25/4/24