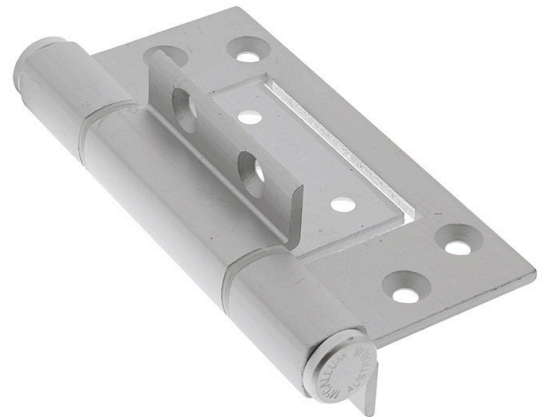




# McCallum A114 Aluminium Heavy Duty Interfold Hinge - Satin Natural Anodised - 100x39x3.4mm

SKU MCA114-SNA

MPNA 114



## DESCRIPTION

### McCallum A114 110x58x3mm HD Fast Fix Hinge Satin Natural Anodized

Suits 40mm minimum thick doors;  
Maximum door weight - 60kgs  
Suits high usage aluminium entrance doors with centre or front edge glazing  
Material - high strength T.6 minimum tensile 254 mpa  
6mm 304 stainless steel pin with machined chamfer on both ends  
Flanged nylon bushes  
Pressed-in interference fit round aluminium encaps  
Squareline heavy duty knuckle  
Pre-drilling of the holes in the timber may be required  
Suitable for some timber door applications  
Please note; pop rivets are not recommended

## SPECIFICATION

<b>MPN</b>	A 114
<b>Brand</b>	McCallum
<b>Product Height</b>	110mm
<b>Product Width</b>	39mm
<b>Hinge Thickness</b>	3.4mm
<b>Product Finish or Colour</b>	Natural Anodised (NAT)
<b>Product Material</b>	T6 Aluminium
<b>Includes Fixing Screws</b>	Yes
<b>Fire Tested</b>	No
<b>Hinge Bearing Type</b>	Flanged Nylon
<b>Fixed / Loose Pin</b>	Fixed
<b>Product Warranty</b>	7 Years



McCallum A114 Aluminium Heavy Duty Interfold Hinge - Satin Natural Anodised - 100x39x3.4mm

Scan to view online and for additional product information , or call us on **1800 555 600**.

Print Date: 26/4/24