

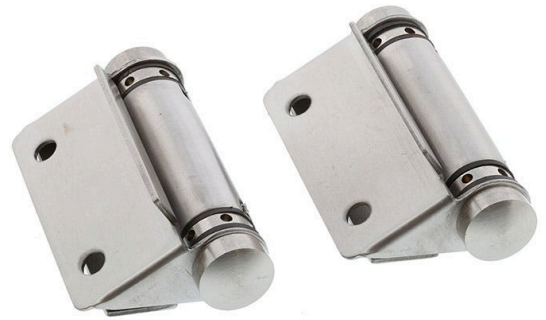


# Metlam 209 Toilet Partition Hold Open Spring Hinge - Satin Stainless Steel

ML209HO-SS

## PRODUCT OPTIONS

Spec\_Fixing\_Method: No Fixing  
Screw Fixing  
Bolt Through



## DESCRIPTION

### Metlam 209 Hold Open Spring Hinge Satin Stainless Steel

Dimensions - 93mm L x 67mm W x 35mm H  
Fixing hole centres - 47mm  
Bolt through fixing  
Spring assisted hold-open  
Rated at 20 - 25kg per hinge - 2 Hinges per door up to 40kg (For doors over 40kg, allow for 20kg per hinge)  
Satin stainless steel finish  
304 grade Stainless Steel

## SPECIFICATION

<b>MPN</b>	209
<b>Brand</b>	Metlam
<b>Product Height</b>	93mm
<b>Product Width</b>	67mm
<b>Hinge Thickness</b>	2.0mm
<b>Product Finish or Colour</b>	Satin Stainless Steel (SSS)
<b>Product Material</b>	304 Stainless Steel
<b>Max Door Weight</b>	20kg
<b>Includes Fixing Screws</b>	Yes
<b>Fixing</b>	Visible Fixed
<b>Product Warranty</b>	1 Year



**Metlam 209 Toilet Partition Hold Open Spring Hinge - Satin Stainless Steel**  
Scan to view online and for additional product information , or call us on **1800 555 600**.

Print Date: 23/4/24