



# Bobrick B3961 Paper Roll Towel Dispenser and Waste Bin - Classic Recessed Model - Satin Stainless Steel

SKU BOB3961

MPNB-3961



## DESCRIPTION

**Bobrick B3961 Classic Recessed Convertible Paper Towel Dispenser/Waste Bin**

### Material

304 stainless steel

### Finish

Satin

### Features

Touch free pull towel mechanism

Seamless beveled flange

Waste capacity: 45.5L

437mm W x 1422mm H

## SPECIFICATION

<b>MPN</b>	B-3961
<b>Brand</b>	Bobrick
<b>Product Height</b>	1422mm
<b>Product Width</b>	437mm
<b>Projection or Length</b>	130mm
<b>Product Depth</b>	230mm
<b>Product Finish or Colour</b>	Satin Stainless Steel (SSS)
<b>Product Material</b>	304 Stainless Steel
<b>AS1428.1 Compliant</b>	Yes
<b>Lockable</b>	Yes
<b>Fixing</b>	Concealed Fixed
<b>Mounting Type</b>	Recessed
<b>Blocking Required</b>	Yes
<b>Capacity</b>	45.5L
<b>Rough Wall Opening Height</b>	1387mm



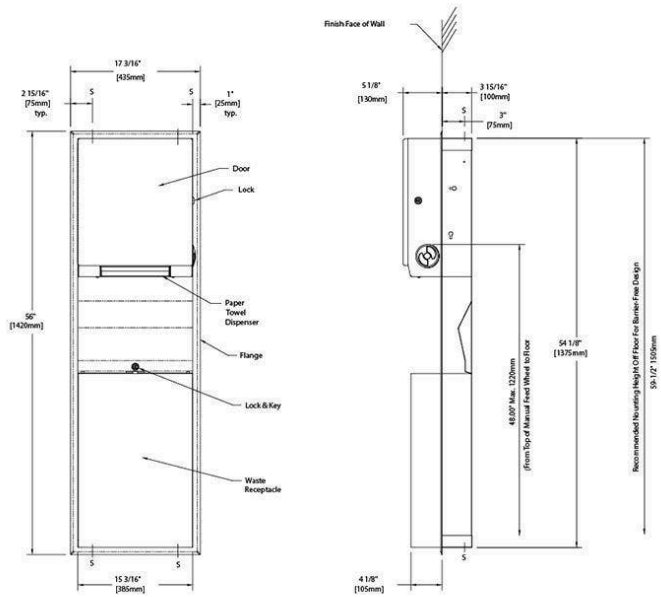
**Bobrick B3961 Paper Roll Towel Dispenser and Waste Bin - Classic Recessed Model - Satin Stainless Steel**

Scan to view online and for additional product information , or call us on **1800 555 600**.

Print Date: 24/4/24

**Rough Wall Opening Width** 403mm  
**Rough Wall Opening Depth** 100mm  
**Orientation** Vertical  
**Product Warranty** 1 Year

**ADDITIONAL IMAGES**



**Bobrick B3961 Paper Roll Towel Dispenser and Waste Bin - Classic Recessed Model - Satin Stainless Steel**  
 Scan to view online and for additional product information , or call us on **1800 555 600**.

Print Date: 24/4/24

