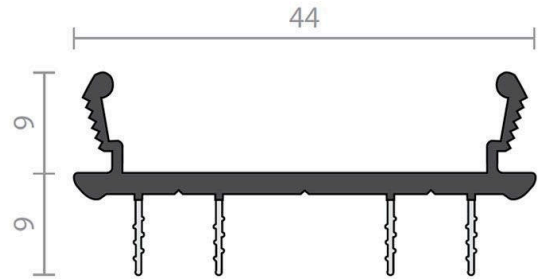




Raven RP89 Door Bottom Sweep Seal 9mm - 1000mm - Black

SKU RP89-1000

MPNA891000



DESCRIPTION

A rigid and flexible co-polymer weather and energy seal. RP89 suits leading proprietary brand, hollow channel aluminium door suites. Concealed in the bottom of aluminium butt hinged doors or the bottom and head of pivot doors, RP89's unique design accommodates OEM and retrofit applications.

When used in conjunction with a Raven threshold plate an excellent weather and energy seal is achieved.

Location: Bottom or top of 40-45mm hollow channel aluminium doors. Suits butt hinged and pivot hinged systems. Sliding doors (user determined).
Min/Max Gap: 6mm to 9mm.

Note: A Raven threshold plate is recommended to clear floor surface.

Fixing: Snap fit design with end support lugs and screws supplied.

Seal: Black rigid and grey flexible UV stabilised co-polymer.

Sizes: 1000mm.

Approvals

Energy NCC Pt. 3.12.3.3 & J3.4.

Durability Tested to over 500,000 operating cycles without failure.

Registered Design.

SPECIFICATION

MPN	A891000
Brand	Raven
Product Height	18mm
Product Length	1000mm
Door Seal Length	1000mm
Product Thickness	44mm
Product Finish or Colour	Black (BLK)
Product Material	Co-Polymer
Includes Fixing Screws	No
Fire Tested	No
Acoustic Rated to AS1191 and ISO140.3	Yes
Suitable for Smoke Doors	Yes
Suitable for Door Type	Aluminium Doors
Bush Fire Attack Level	BAL <29



Raven RP89 Door Bottom Sweep Seal 9mm - 1000mm - Black

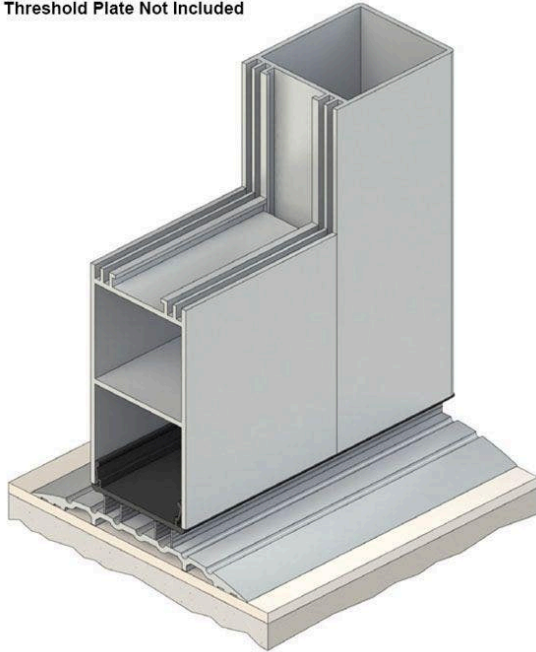
Scan to view online and for additional product information , or call us on **1800 555 600**.

Print Date: 23/4/24

Contains Intumescent Material	No
Seal Can Be Installed	Rebated
Brush / Gasket Length	9mm
Gasket Material	Co-Polymer
Min Door Gap	6mm
Max Door Gap	9mm
Self Adhesive	No
Product Warranty	2 Years

ADDITIONAL IMAGES

RP116 Threshold Plate Not Included



Raven RP89 Door Bottom Sweep Seal 9mm - 1000mm - Black
Scan to view online and for additional product information , or call us on **1800 555 600**.

Print Date: 23/4/24