



**DOMINATOR**  
SAFES

# Dominator HS-1 Safe with Ross 700 Key Lock - Black - 355 H x 355 W x 355mm D

SKU AS.DOM.HS.1.K

MPNHS-1K



Note: La Gard Electronic Lock version shown.

## DESCRIPTION

The Dominator Safes® HS Series safes are designed to provide protection against both burglary and fire, while maintaining the efficient sizing of a typical domestic safe. Including 30 minute fire protection as well as several attack resisting qualities, the HS series is the ideal solution to protecting valuables in the home.

### Features:

- 12mm thick solid steel door
- 6mm thick steel body with 12mm fire panel
- 30 minute fire protection
- Internal hardened steel anti drill plates
- Case mounted reloading device
- Hinge side anti pry protection
- Vinyl lined interior walls and shelving
- 4 internal recessed bolt down provisions
- Universal lock footprint for easy lock conversion
- 5 year structural warranty to safe
- US made LaGard digital locks or Australian made key locks as standard
- Durable painted finish
- Exterior lift off hinges
- Key hooks and document pockets conveniently located on internal back panel

### Specifications:

- External dimensions: 355mm h x 355mm w x 355mm d
- Internal dimensions: 315mm h x 315mm w x 249mm d
- Door open width: 660mm
- Door open depth: 680mm
- Weight: 53kg
- Capacity: 25L
- Internal fittings: 1 adjustable shelf
- Paint finish: Textured black paint
- Locking points: 3
- Bolt down provisions: 4 internal recessed bolt holes
- Fire Rating: 30 minute recommended
- Cash Rating: \$20,000 in unsupported application



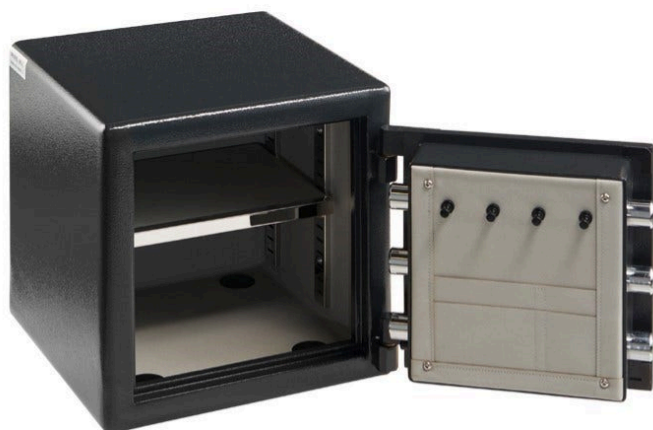
**Dominator HS-1 Safe with Ross 700 Key Lock - Black - 355 H x 355 W x 355mm D**  
Scan to view online and for additional product information , or call us on **1800 555 600**.

Print Date: 27/4/24

## SPECIFICATION

<b>MPN</b>	HS-1K
<b>Brand</b>	Dominator Safes
<b>Product Width</b>	355mm
<b>Product Height</b>	355mm
<b>Product Depth</b>	355mm
<b>Product Thickness</b>	18mm
<b>Product Finish or Colour</b>	Black (BLK)
<b>Product Material</b>	Steel
<b>Fire Rating</b>	30 min
<b>Cash Rating</b>	\$20,000
<b>SCEC Rating</b>	No
<b>Fixing</b>	Concealed Fixed
<b>Number of Keys Included</b>	2
<b>Lock Type</b>	Ross 700 Key Lock
<b>Number of Shelves</b>	1
<b>Number of Locking Points</b>	6
<b>Weight</b>	53kg
<b>Product Warranty</b>	5 Years

## ADDITIONAL IMAGES



**Dominator HS-1 Safe with Ross 700 Key Lock - Black - 355 H x 355 W x 355mm D**  
Scan to view online and for additional product information , or call us on **1800 555 600**.

Print Date: 27/4/24