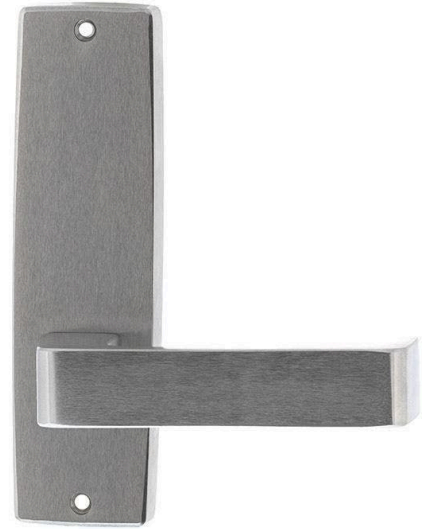




# Lockwood 1905-90 Internal Plate with Lever - Satin Chrome

SKU LW1905-90SC

MPN1905/90SC



## DESCRIPTION

### Lockwood 1905/90 Internal Plate & Lever Satin Chrome

Dimensions - 166mm x 48mm x 12mm  
Suits 32mm - 50mm Timber Doors (Separate extended screws available)  
Satin Chrome finish  
25 year manufacturer's warranty  
Suits Lockwood 3570 Series mortice locks  
Australian Made  
Fire Rated (4Hrs)  
S3 Security & D3 Durability Rating (AS4145.2-1993)

## SPECIFICATION

<b>MPN</b>	1905/90SC
<b>Brand</b>	Lockwood
<b>Product Height</b>	166mm
<b>Product Length</b>	142.5mm
<b>Product Thickness</b>	12mm
<b>Projection or Length</b>	51.5mm
<b>Plate Width</b>	48mm
<b>Plate Height</b>	166mm
<b>Product Finish or Colour</b>	Satin Chrome (SC)
<b>Product Material</b>	Brass
<b>Includes Fixing Screws</b>	No
<b>AS1428.1 Compliant</b>	Yes
<b>Fire Tested</b>	Yes
<b>Square / Round Face</b>	Square
<b>Handing</b>	Non-Handed
<b>Spindle Size</b>	7.6mm
<b>Fixing</b>	Visible Fixed
<b>Finger Clearance</b>	44.5mm
<b>Max Door Thickness</b>	45mm
<b>Product Warranty</b>	25 Years



### Lockwood 1905-90 Internal Plate with Lever - Satin Chrome

Scan to view online and for additional product information , or call us on **1800 555 600**.

Print Date: 26/4/24